



2026

CATALOG

About Heritage Structures

Our Background and Core Values

Heritage Structures is a family-owned business specializing in building quality portable structures in New York since 2004.

Our core values are built on consistent quality, lasting relationships, and fair pricing. By using industry-leading materials and techniques, we bring unmatched value to our customers and back it up with our Lifetime Warranty.

Offering an array of colors and designs to choose from, our structures exhibit a creative style that

sets them apart. Experience for yourself something truly grand - a Heritage Structure in your backyard.

OUR BUSINESS PHILOSOPHY

As a family-owned business, our first priority is to bring glory to God in all we do. It's how we approach each day and each of you as our valued customers. We want to impart honesty, a positive attitude, respect, and trust to all whom we interact with. We trust that our products will inspire you and add structure and beauty to your life.





Why Choose Heritage Structures?

✓ HERITAGE STRUCTURES ADVANTAGES: ✗ TYPICAL NY SHED VENDORS:

| | |
|--|---|
| Top to bottom Lifetime Warranty. Covers everything , no questions asked. All buildings are quality controlled. Standard. | No warranty, or maximum of 5-year limited warranty. |
| All Standard, Deluxe, and Classic buildings have 16" on center truss and stud spacing, fastened with hurricane ties and metal truss plates. Standard. | 24" on center rafters and studs. Additional cost to upgrade to 16" spacing or trusses gusseted with plywood. |
| Available magnetic door stops on every structure we build. | Doors swing loose and bang in the wind, damaging the shed over time. |
| Larger, heavier aluminum diamond plate threshold. Standard. | Galvanized or undersized door sills. |
| Metal roof at no extra cost (with underlayment and 4'x8' sheeting underneath!). Standard. Or GAF shingles, your choice. | Brittle IKO brand shingles or any type of metal brand used; no non-fade guarantee of any sort. Additional charge for underlayment under metal or shingles. |
| Optional. TechShield interior and 7/16" LP SmartSide, standard on deluxe series. Keeps the interior cooler and brighter. | Mold-prone plywood interiors which also warp more easily. TechShield not available for walls and roof, or an upcharge if available. Hotter and stuffier inside. |
| Taller, more spacious buildings, with better overall appeal and usefulness by utilizing proper roof pitch, wall height, and lofts. | Shorter walls and flatter roofs, leaving less useful interior space and lower curb appeal. |
| Treated floor joists. Standard. | Additional upcharge for treated joists. |
| Unique, quality flooring options: <ul style="list-style-type: none">• Polyfloor shield coating Available• ¾" LP Prostruct tongue and groove. Standard | Limited flooring choices, or old-style green-type plywood that gaps over time and carries harsh chemicals. 5/8" thinner flooring. |
| Available gravel sites and block packages, with predictable rates so overall project costs less. One stop for complete project pricing. | Need to work with a 3rd party contractor for site prep; overall project costs higher due to exorbitant site prep costs. |

Designing Your Structure

We make the process easy!

From start to finish, we help you design the perfect space to be comfortable, organized and happy. We stand behind our structures with a lifetime warranty.

Our structures are built by local Craftsmen who value hard work and detail. We are committed to bring you the best in every step from design to delivery.



WE STAND BEHIND OUR BUILDINGS

6 HELPFUL STEPS TO DESIGN YOUR STRUCTURE

1

ACCESS & SITE

Is access a problem? Need to build on site? We'll build anywhere with our crews! (Adds 25%)

2

CHOOSE STYLE & SIZE

Tip - It's always better to go with a size larger than you think you may need now.

3

SELECT OPTIONS

From practical to decorative, find the portable building of your dreams.

4

WINDOWS & DOORS

Specify the type and quantity of doors and windows.

5

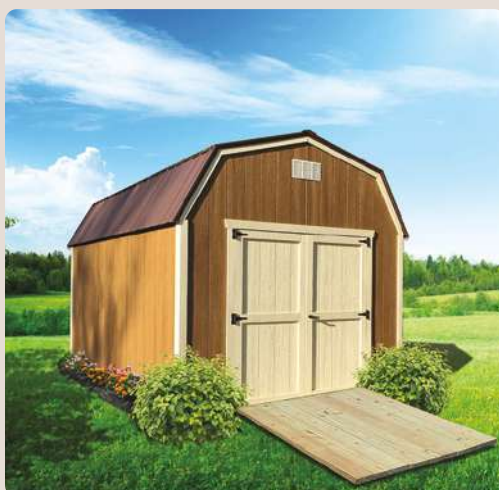
FINISH & COLOR

You've got choices, from low-maintenance vinyl to durable LP SmartSide finished in paint or urethane.

6

CHOOSE PAYMENT

We offer several options including: financing, cash, check, Rent-to-Own, or credit card.



What Customers Have to Say

“

"Thank you for the wonderful job you have done on Joni's SheShed! Right from the start you were courteous and thoughtful regarding our needs. You knew this was going to be a difficult task and your patience was always appreciated as we changed layouts, colors and roofing. You worked with us continuously until we felt comfortable with the finished design. Although this was a difficult season because of the bad weather, you kept in touch with us and kept your word on the delivery date and pricing. Lastly, your cost was considerably lower than other contractors we contacted and the quality of your workmanship was outstanding. Your craftsmen always kept our needs front and center. We can't say enough about Heritage Structures! Thank you again."

JONI & JOHN, FAIRPORT, NY

“

"We have purchased a total of 5 sheds to date. I would only purchase a Heritage Structure! I have searched a lot of sheds and beyond all others, Heritage Structures are the best quality for the money."

**TIMOTHY NEWMAN, ENGINEER
RANSOMVILLE, NY**

“

"Thanks for doing such a nice job on our shed. I appreciate the care you took to do everything right. I'm very happy with the shed. I will recommend you folks to other people that are interested in sheds. Thanks for your witness to others through the quality and integrity of your craft: You folks at Heritage Structures executed my purchase from concept to delivery with professionalism."

**DAVE PORTER, ENGINEER
BATAVIA, NY**

“

"The job was done quickly and it is incredible. All for a good price. Highly recommend. Construction workers were very pleasant to work with as was the office staff where we placed our order."

VALORIE COVELL

“

"We are satisfied with another customized shed. Actually, this is our third shed we've purchased from Heritage Structures! I would highly recommend their buildings!"

**RICHARD CAMPBELL, RETIRED
ATTORNEY & TOWN JUDGE, AKRON, NY**



Building Styles



STANDARD LAYOUT



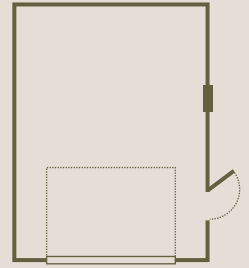
Cape Cod STARTING AT \$3,245

STANDARD SERIES **•S•**

A popular shed design that looks good and makes a great workshop. The Cape Cod is at home in any backyard with a simple, elegant design that offers lots of flexibility.



STANDARD LAYOUT

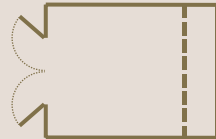


Cape Cod Garage STARTING AT \$7,280

A charming garage design that not only looks great but also makes a perfect workshop. The Cape Cod Cottage Garage fits beautifully into any backyard with its simple design, offering plenty of flexibility and inviting charm.



STANDARD LAYOUT



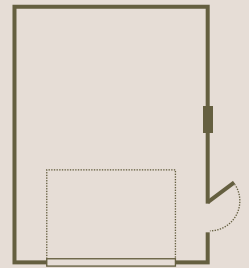
New England Dutch Barn STARTING AT \$3,995

STANDARD SERIES **•S•**

The New England Dutch Barn is a customer favorite that combines good looks with a standard loft for huge interior storage space.



STANDARD LAYOUT

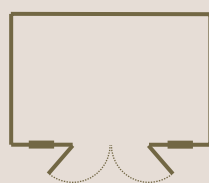


New England Dutch Garage STARTING AT \$7,677

The New England Dutch Barn Garage is a customer favorite design that is both attractive and practical. Additionally, it features spacious overhead storage, perfect for keeping your garage organized and clutter-free.



STANDARD LAYOUT



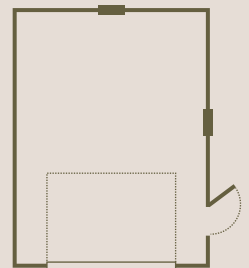
Gable Cottage STARTING AT \$3,995

DELUXE SERIES **•D•**

An appealing shed style that fits many settings, our well-loved Gable Cottage is a great choice for those who want a shed that looks as good as it functions.



STANDARD LAYOUT

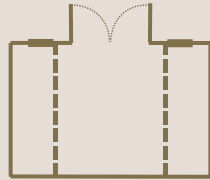


Gable Cottage Garage STARTING AT \$7,977

Our beloved Gable Cottage Garage offers a charming style that complements any setting. It's an excellent choice for those seeking both functionality and a prestigious design. With 88.5" tall walls, it provides ample storage space too!



STANDARD LAYOUT



Gambrel Loft Barn

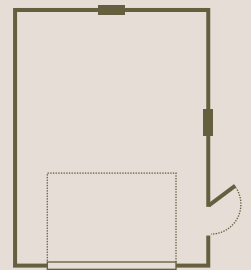
STARTING AT \$4,895

DELUXE SERIES •D•

The Gambrel Loft Barn provides added style, and its loft increases the storage space for better organization.



STANDARD LAYOUT



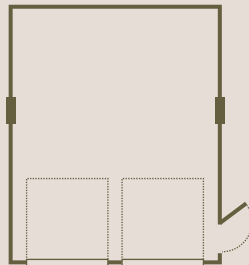
Gambrel Loft Garage

STARTING AT \$8,877

The Gambrel Loft Barn Garage combines a distinctive style with versatile functionality, making it a perfect fit for any environment. Ideal for those who value both practicality and elegant design, it features tall walls with overhead loft area that offer generous storage space.



STANDARD LAYOUT



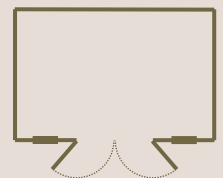
Double Wide Garage

STARTING AT \$21,649

Our spacious Double Wide Garage stands out with its generous size, making it an ideal choice for those who need ample room for vehicles, storage, and more. Its expansive design ensures you have plenty of space to accommodate all your needs while maintaining a stylish and functional appearance.



STANDARD LAYOUT



Classic Chalet

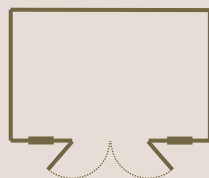
STARTING AT \$4,395

CLASSIC SERIES •C•

The Classic Chalet is a distinction of its own. A steep roof and Swiss character plus a variety of elite design options makes our chalet a truly elegant addition to your yard.



STANDARD LAYOUT



Classic Quaker

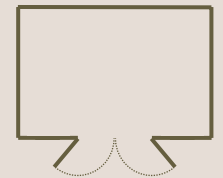
STARTING AT \$4,375

CLASSIC SERIES •C•

The Classic Quaker is a charming blend of form and function. Our Quaker's Classic style accents your backyard or estate with elite design details.



STANDARD LAYOUT



Classic Studio

STARTING AT \$4,366

CLASSIC SERIES •C•

Single-slant roof with 76" back wall and overhangs all around for a classy, modern look!



STANDARD LAYOUT



Timber Frame Pavilion

STARTING AT \$2,845

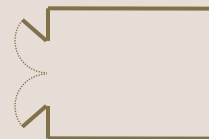
PAVILION



Our Pavilion features rustic construction from native New York lumber, and creates the ideal outdoor space for your family and friends to gather and relax.



STANDARD LAYOUT



Utility

STARTING AT \$3,095

BETTER BUY SERIES



The Utility provides affordable storage space for almost anything you can think of. High quality craftsmanship in a simple package ensures that you get your money's worth.



STANDARD LAYOUT



Lofted Barn

STARTING AT \$3,745

BETTER BUY SERIES



Spacious and affordable! The Lofted Barn has all the space you need for stowing your stuff out of the weather and comes with a loft for even more usable space inside.



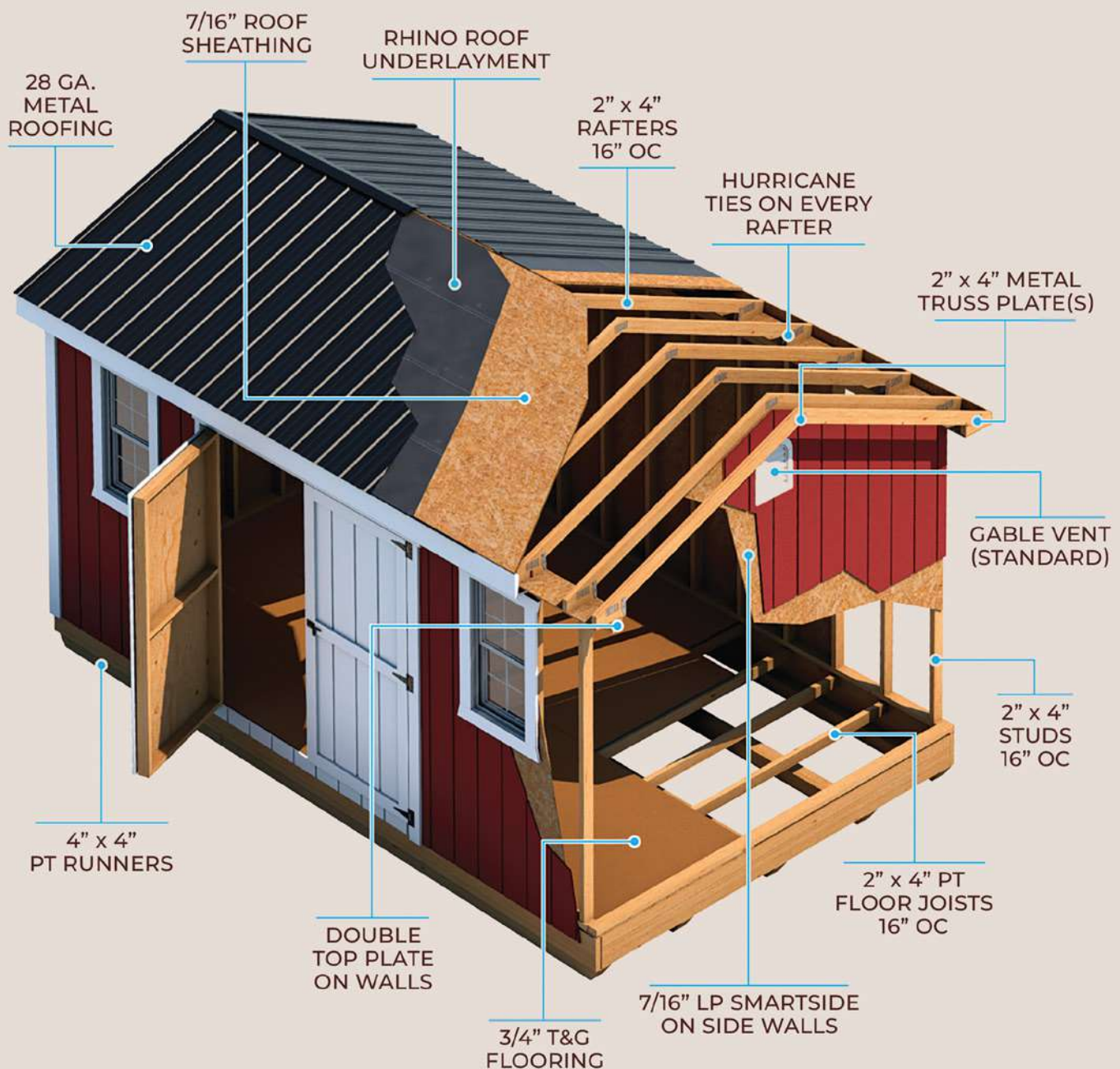
Heritage Structures proudly provides a lifetime warranty, covering manufacturing defects and material failure. The expected longevity of our products is 50-60 years for vinyl or LP SmartSide structures.

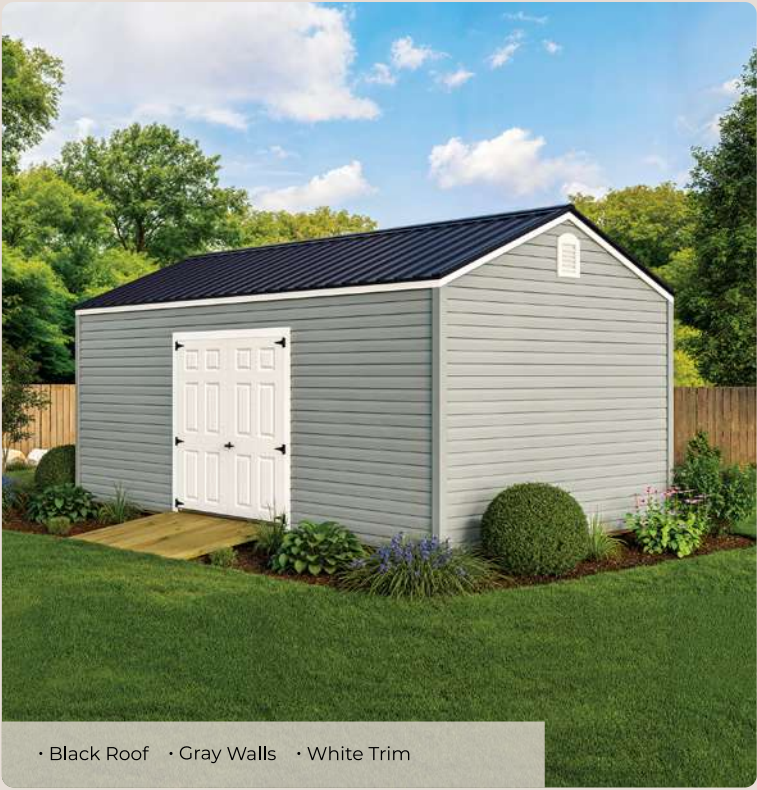
Routine care, cleaning, painting, caulking, and adequate airflow ensure that your Heritage Structures product remains a source of enjoyment for years to come.

Our Build Quality is in the Details



** Image depicts the standard build details for the Deluxe Series*





STANDARD SERIES 

Cape Cod Cottage

A popular shed design that looks good and makes a great workshop. The Cape Cod is at home in any backyard with a simple, elegant design that offers lots of flexibility.

120 DAYS SAME AS CASH



LP SMARTSIDING OR VINYL ON 80" TALL WALLS ON 8' & 10' WIDES. 85" TALL WALLS ON 12, 14, AND 16' WIDES.



LIFETIME WARRANTY



MANY OPTIONS AVAILABLE

PRICE INCLUDES:

1 set of 6' Double Doors, 16" OC Floor Joists, 16" OC Wall Studs and Rafters

| WxL | LP | RTO | VINYL | RTO |
|---------|-------------|----------|-------------|----------|
| 8 x 8 | \$3,245.00 | \$119.30 | \$3,729.50 | \$137.11 |
| 8 x 10 | \$3,495.00 | \$128.49 | \$4,004.50 | \$147.22 |
| 8 x 12 | \$3,695.00 | \$135.85 | \$4,224.50 | \$155.31 |
| 8 x 14 | \$4,295.00 | \$157.90 | \$4,884.50 | \$179.58 |
| 8 x 16 | \$4,495.00 | \$165.26 | \$5,104.50 | \$187.67 |
| 10 x 10 | \$4,195.00 | \$154.23 | \$4,736.55 | \$174.14 |
| 10 x 12 | \$4,495.00 | \$165.26 | \$5,063.55 | \$186.16 |
| 10 x 14 | \$5,045.00 | \$185.48 | \$5,663.05 | \$208.20 |
| 10 x 16 | \$5,445.00 | \$200.18 | \$6,099.05 | \$224.23 |
| 10 x 20 | \$6,295.00 | \$231.43 | \$7,025.55 | \$258.29 |
| 12 x 12 | \$5,345.00 | \$196.51 | \$5,940.60 | \$218.40 |
| 12 x 14 | \$5,945.00 | \$218.57 | \$6,588.60 | \$242.23 |
| 12 x 16 | \$6,245.00 | \$229.60 | \$6,912.60 | \$254.14 |
| 12 x 20 | \$7,195.00 | \$264.52 | \$7,938.60 | \$291.86 |
| 12 x 24 | \$8,095.00 | \$297.61 | \$8,910.60 | \$327.60 |
| 12 x 28 | \$9,145.00 | \$336.21 | \$10,044.60 | \$369.29 |
| 12 x 32 | \$10,445.00 | \$384.01 | \$11,448.60 | \$420.90 |

| WxL | LP | RTO | VINYL | RTO |
|---------|-------------|----------|-------------|----------|
| 12 x 36 | \$11,695.00 | \$429.96 | \$12,798.60 | \$470.54 |
| 12 x 40 | \$12,945.00 | \$475.92 | \$14,148.60 | \$520.17 |
| 14 x 16 | \$8,045.00 | \$295.77 | \$15,360.65 | \$564.73 |
| 14 x 20 | \$9,145.00 | \$336.21 | \$9,957.15 | \$366.07 |
| 14 x 24 | \$10,245.00 | \$376.65 | \$11,134.15 | \$409.34 |
| 14 x 28 | \$11,595.00 | \$426.29 | \$12,578.65 | \$462.45 |
| 14 x 32 | \$12,945.00 | \$475.92 | \$14,023.15 | \$515.56 |
| 14 x 36 | \$14,295.00 | \$525.55 | \$15,467.65 | \$568.66 |
| 14 x 40 | \$15,595.00 | \$573.35 | \$16,858.65 | \$619.80 |
| 16 x 24 | \$11,595.00 | \$426.29 | \$12,466.70 | \$458.33 |
| 16 x 28 | \$13,245.00 | \$486.95 | \$14,215.70 | \$522.64 |
| 16 x 32 | \$14,895.00 | \$547.61 | \$15,964.70 | \$586.94 |
| 16 x 36 | \$16,545.00 | \$608.27 | \$17,713.70 | \$651.24 |
| 16 x 40 | \$18,195.00 | \$668.93 | \$19,462.70 | \$715.54 |
| 16 x 44 | \$19,845.00 | \$729.60 | \$21,211.70 | \$779.84 |
| 16 x 48 | \$21,295.00 | \$782.90 | \$22,748.70 | \$836.35 |



• Black Roof • Charcoal Walls • Barn White Trim



• Burnished Slate Roof • Tan Walls • White Trim

STANDARD SERIES 

Cape Cod Garage

A charming garage design that not only looks great but also makes a perfect workshop. The Cape Cod Cottage Garage fits beautifully into any backyard with its simple design, offering plenty of flexibility and inviting charm.

120 DAYS SAME AS CASH



LP SMARTSIDING OR VINYL
ON 85" TALL WALLS



LIFETIME WARRANTY



MANY OPTIONS
AVAILABLE

PRICE INCLUDES:

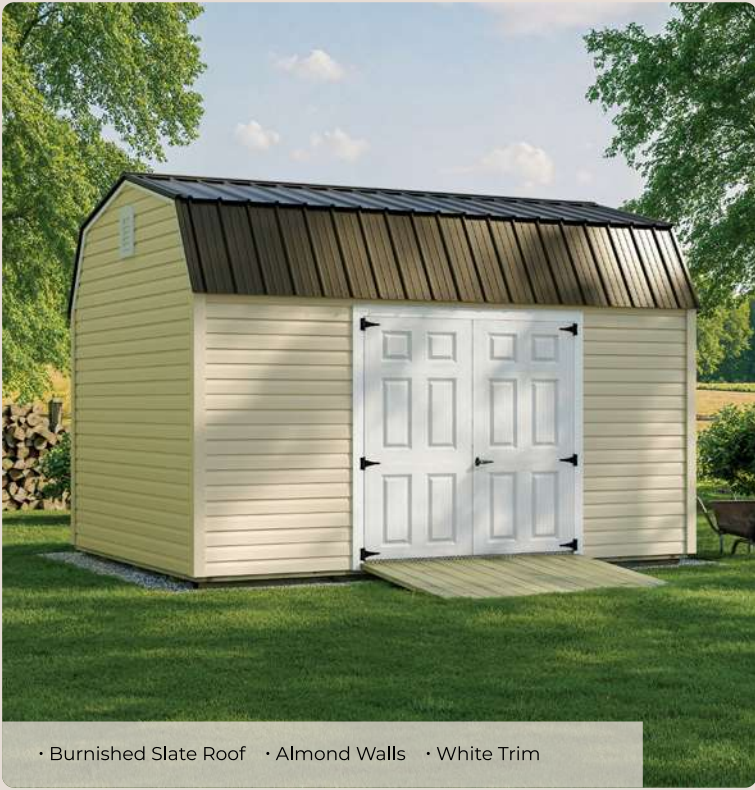
(1) 3' Entry Door, (1) Overhead Door, (1) 24" x 36" Window
8" OC Floor Joists, 16" OC Wall Studs and Rafters

| WxL | LP | RTO | VINYL | RTO |
|----------------|-------------|----------|-------------|----------|
| 10 x 16 | \$7,296.15 | \$268.24 | \$7,906.98 | \$290.70 |
| 10 x 20 | \$8,231.65 | \$302.63 | \$8,924.34 | \$328.10 |
| 10 x 24 | \$9,434.65 | \$346.86 | \$10,233.27 | \$376.22 |
| 10 x 28 | \$10,744.65 | \$395.02 | \$11,658.83 | \$428.63 |
| 12 x 16 | \$7,756.00 | \$285.15 | \$8,348.60 | \$306.93 |
| 12 x 20 | \$8,735.25 | \$321.15 | \$9,403.85 | \$345.73 |
| 12 x 24 | \$9,664.50 | \$355.31 | \$10,405.10 | \$382.54 |
| 12 x 28 | \$10,743.75 | \$394.99 | \$11,568.35 | \$425.31 |
| 12 x 32 | \$12,073.00 | \$443.86 | \$13,001.60 | \$478.00 |
| 12 x 36 | \$13,352.25 | \$490.89 | \$14,380.85 | \$528.71 |
| 12 x 40 | \$14,631.50 | \$537.92 | \$15,760.10 | \$579.42 |
| 14 x 16 | \$9,576.80 | \$352.09 | \$10,236.95 | \$376.36 |
| 14 x 20 | \$10,711.25 | \$393.80 | \$11,448.40 | \$420.90 |

| WxL | LP | RTO | VINYL | RTO |
|----------------|-------------|----------|-------------|----------|
| 14 x 24 | \$11,845.70 | \$435.50 | \$12,659.85 | \$465.44 |
| 14 x 28 | \$13,230.15 | \$486.40 | \$14,138.80 | \$519.81 |
| 14 x 32 | \$14,614.60 | \$537.30 | \$15,617.75 | \$574.18 |
| 14 x 36 | \$15,999.05 | \$588.20 | \$17,096.70 | \$628.56 |
| 14 x 40 | \$17,333.50 | \$637.26 | \$18,522.15 | \$680.96 |
| 16 x 20 | \$11,537.25 | \$424.16 | \$12,234.95 | \$449.81 |
| 16 x 24 | \$13,226.90 | \$486.28 | \$14,023.60 | \$515.57 |
| 16 x 28 | \$14,916.55 | \$548.40 | \$15,812.25 | \$581.33 |
| 16 x 32 | \$16,606.20 | \$610.52 | \$17,600.90 | \$647.09 |
| 16 x 36 | \$18,295.85 | \$672.64 | \$19,389.55 | \$712.85 |
| 16 x 40 | \$19,985.50 | \$734.76 | \$21,178.20 | \$778.61 |
| 16 x 44 | \$21,675.15 | \$796.88 | \$22,966.85 | \$844.37 |
| 16 x 48 | \$23,164.80 | \$851.65 | \$24,543.50 | \$902.33 |



• Black Roof • Jamestown Red Walls • Barn White Trim



• Burnished Slate Roof • Almond Walls • White Trim

STANDARD SERIES



New England Dutch Barn

The New England Dutch Barn is a customer favorite that combines good looks with a standard loft for huge interior storage space.

120 DAYS SAME AS CASH



LP SMARTSIDING OR VINYL
ON 77" TALL WALLS



LIFETIME WARRANTY



MANY OPTIONS
AVAILABLE

PRICE INCLUDES:

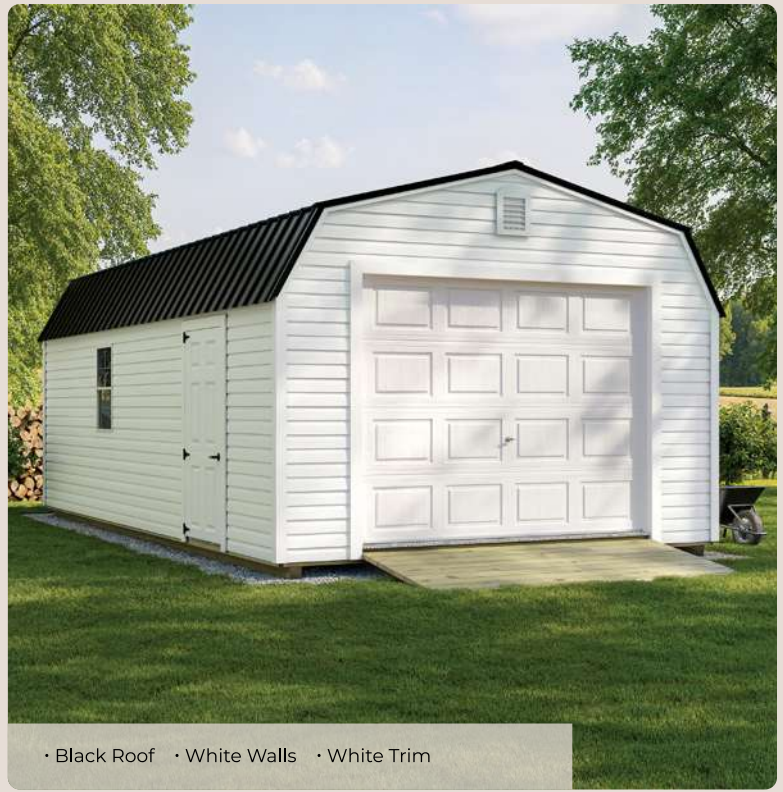
6' Double Doors, 16" Floor Joists, (1) 4' Loft
16" OC Wall Studs and Rafters

| WxL | LP | RTO | VINYL | RTO |
|---------|-------------|----------|-------------|----------|
| 8 x 8 | \$3,995.00 | \$146.88 | \$4,554.50 | \$167.44 |
| 8 x 10 | \$4,245.00 | \$156.07 | \$4,829.50 | \$177.56 |
| 8 x 12 | \$4,495.00 | \$165.26 | \$5,104.50 | \$187.67 |
| 8 x 14 | \$5,045.00 | \$185.48 | \$5,709.50 | \$209.91 |
| 8 x 16 | \$5,245.00 | \$192.83 | \$5,929.50 | \$218.00 |
| 10 x 10 | \$4,945.00 | \$181.80 | \$5,554.05 | \$204.19 |
| 10 x 12 | \$5,145.00 | \$189.15 | \$5,772.05 | \$212.21 |
| 10 x 14 | \$5,945.00 | \$218.57 | \$6,644.05 | \$244.27 |
| 10 x 16 | \$6,195.00 | \$227.76 | \$6,916.55 | \$254.28 |
| 10 x 20 | \$7,245.00 | \$266.36 | \$8,061.05 | \$296.36 |
| 12 x 12 | \$5,745.00 | \$211.21 | \$6,372.60 | \$234.29 |
| 12 x 14 | \$6,595.00 | \$242.46 | \$7,290.60 | \$268.04 |
| 12 x 16 | \$6,795.00 | \$249.82 | \$7,506.60 | \$275.98 |
| 12 x 20 | \$7,895.00 | \$290.26 | \$8,694.60 | \$319.65 |
| 12 x 24 | \$9,145.00 | \$336.21 | \$10,044.60 | \$369.29 |
| 12 x 28 | \$10,295.00 | \$378.49 | \$11,286.60 | \$414.95 |
| 12 x 32 | \$11,445.00 | \$420.77 | \$12,528.60 | \$460.61 |

| WxL | LP | RTO | VINYL | RTO |
|---------|-------------|----------|-------------|----------|
| 12 x 36 | \$12,545.00 | \$461.21 | \$13,716.60 | \$504.29 |
| 12 x 40 | \$13,645.00 | \$501.65 | \$14,904.60 | \$547.96 |
| 14 x 16 | \$8,695.00 | \$319.67 | \$9,475.65 | \$348.37 |
| 14 x 20 | \$9,795.00 | \$360.11 | \$10,652.65 | \$391.64 |
| 14 x 24 | \$10,895.00 | \$400.55 | \$11,829.65 | \$434.91 |
| 14 x 28 | \$12,295.00 | \$452.02 | \$13,327.65 | \$489.99 |
| 14 x 32 | \$13,595.00 | \$499.82 | \$14,718.65 | \$541.13 |
| 14 x 36 | \$14,895.00 | \$547.61 | \$16,109.65 | \$592.27 |
| 14 x 40 | \$16,195.00 | \$595.40 | \$17,500.65 | \$643.41 |
| 16 x 24 | \$15,045.00 | \$553.13 | \$16,123.70 | \$592.78 |
| 16 x 28 | \$15,895.00 | \$584.38 | \$17,024.70 | \$625.91 |
| 16 x 32 | \$16,745.00 | \$615.63 | \$17,925.70 | \$659.03 |
| 16 x 36 | \$17,595.00 | \$646.88 | \$18,826.70 | \$692.16 |
| 16 x 40 | \$19,195.00 | \$705.70 | \$20,522.70 | \$754.51 |
| 16 x 44 | \$20,045.00 | \$736.95 | \$21,423.70 | \$787.64 |
| 16 x 48 | \$21,595.00 | \$793.93 | \$23,066.70 | \$848.04 |



• Black Roof • Clay Walls • Barn White Trim



• Black Roof • White Walls • White Trim

STANDARD SERIES 

New England Dutch Garage

The New England Dutch Barn Garage is a customer favorite design that is both attractive and practical. Additionally, it features spacious overhead storage, perfect for keeping your garage organized and clutter-free.

120 DAYS SAME AS CASH



LP SMARTSIDING OR VINYL
ON 77" TALL WALLS



LIFETIME WARRANTY



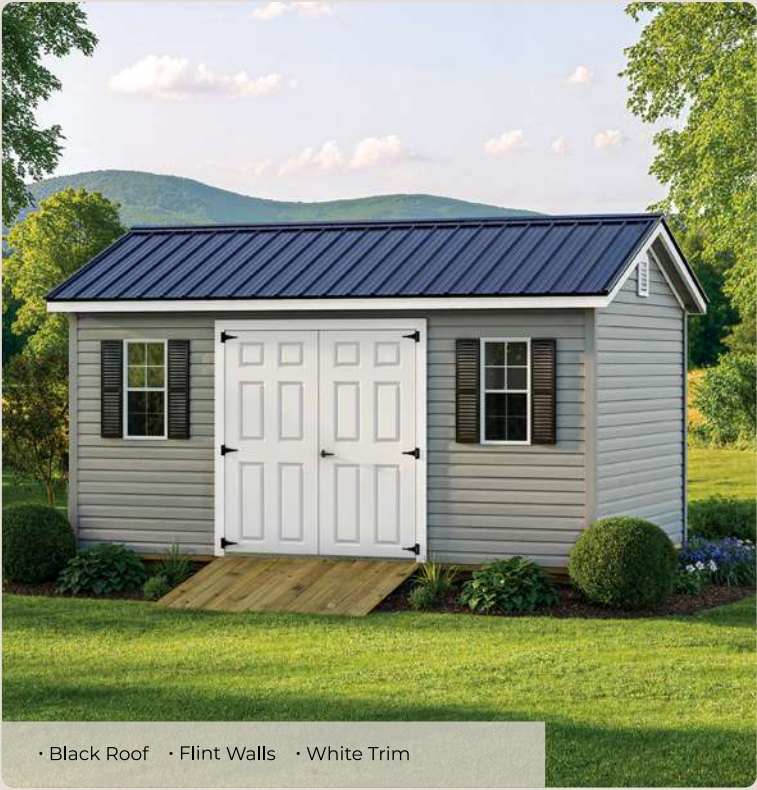
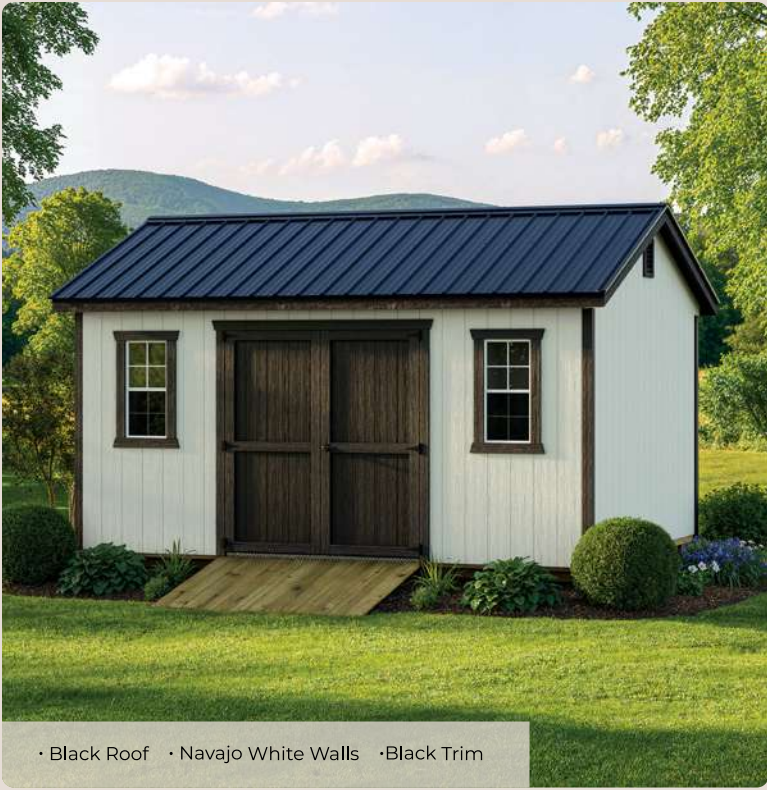
MANY OPTIONS
AVAILABLE

PRICE INCLUDES:

- (1) 3' Entry Door, (1) Overhead Door, (1) 24" x 36" Window
- 8" OC Floor Joists, 16" OC Wall Studs and Rafters,
- (1) 4' Loft

| WxL | LP | RTO | VINYL | RTO |
|----------------|-------------|----------|-------------|----------|
| 10 x 16 | \$7,693.00 | \$282.83 | \$8,339.55 | \$306.60 |
| 10 x 20 | \$8,769.00 | \$322.39 | \$9,510.05 | \$349.63 |
| 10 x 24 | \$10,095.00 | \$371.14 | \$10,953.05 | \$402.69 |
| 10 x 28 | \$11,271.00 | \$414.38 | \$12,232.55 | \$449.73 |
| 12 x 16 | \$8,306.00 | \$305.37 | \$8,942.60 | \$328.77 |
| 12 x 20 | \$9,435.25 | \$346.88 | \$10,159.85 | \$373.52 |
| 12 x 24 | \$10,714.50 | \$393.92 | \$11,539.10 | \$424.23 |
| 12 x 28 | \$11,893.75 | \$437.27 | \$12,810.35 | \$470.97 |
| 12 x 32 | \$13,073.00 | \$480.63 | \$14,081.60 | \$517.71 |
| 12 x 36 | \$14,202.25 | \$522.14 | \$15,298.85 | \$562.46 |
| 12 x 40 | \$15,331.50 | \$563.66 | \$16,516.10 | \$607.21 |
| 14 x 16 | \$10,226.80 | \$375.99 | \$10,932.45 | \$401.93 |
| 14 x 20 | \$11,361.25 | \$417.69 | \$12,143.90 | \$446.47 |

| WxL | LP | RTO | VINYL | RTO |
|----------------|-------------|----------|-------------|----------|
| 14 x 24 | \$12,495.70 | \$459.40 | \$13,355.35 | \$491.01 |
| 14 x 28 | \$13,930.15 | \$512.14 | \$14,877.80 | \$546.98 |
| 14 x 32 | \$15,264.60 | \$561.20 | \$16,313.25 | \$599.75 |
| 14 x 36 | \$16,599.05 | \$610.26 | \$17,738.70 | \$652.16 |
| 14 x 40 | \$17,933.50 | \$659.32 | \$19,164.15 | \$704.56 |
| 16 x 20 | \$15,787.25 | \$580.41 | \$16,739.95 | \$615.44 |
| 16 x 24 | \$16,676.90 | \$613.12 | \$17,680.60 | \$650.02 |
| 16 x 28 | \$17,566.55 | \$645.83 | \$18,621.25 | \$684.60 |
| 16 x 32 | \$18,456.20 | \$678.54 | \$19,561.90 | \$719.19 |
| 16 x 36 | \$19,345.85 | \$711.24 | \$20,505.55 | \$753.88 |
| 16 x 40 | \$20,985.50 | \$771.53 | \$22,238.20 | \$817.58 |
| 16 x 44 | \$21,875.15 | \$804.23 | \$23,178.85 | \$852.16 |
| 16 x 48 | \$23,464.80 | \$862.68 | \$24,861.50 | \$914.03 |



DELUXE SERIES 

Gable Cottage

An appealing shed style that fits many settings, our well-loved Gable Cottage is a great choice for those who want a shed that looks as good as it functions. With 88.5" tall walls, it has plenty of storage space too!

120 DAYS SAME AS CASH



LP SMARTSIDING OR VINYL 6" OVERHANGS ON 85.5" TALL WALLS



LIFETIME WARRANTY



MANY OPTIONS AVAILABLE

PRICE INCLUDES:

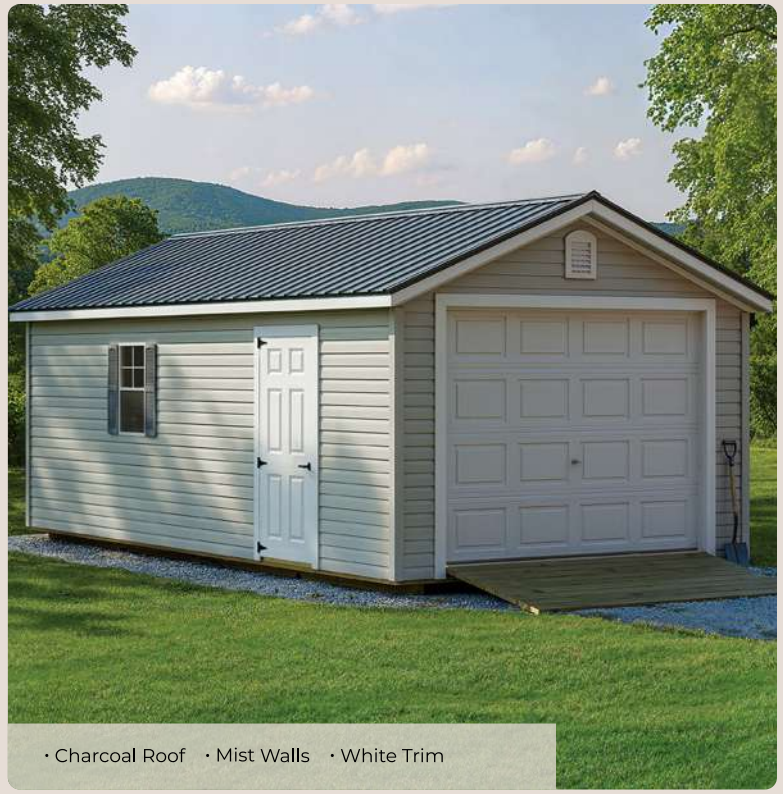
6' Double Doors, (2) 18" x 36" Windows, 16" OC Floor Joists, 16" OC Wall Studs and Rafters. Techshield included.

| WxL | LP | RTO | VINYL | RTO |
|---------|-------------|----------|-------------|----------|
| 8 x 8 | \$3,995.00 | \$146.88 | \$4,720.70 | \$173.56 |
| 8 x 10 | \$4,245.00 | \$156.07 | \$4,995.70 | \$183.67 |
| 8 x 12 | \$4,595.00 | \$168.93 | \$5,380.70 | \$197.82 |
| 8 x 14 | \$5,195.00 | \$190.99 | \$6,040.70 | \$222.08 |
| 8 x 16 | \$5,545.00 | \$203.86 | \$6,425.70 | \$236.24 |
| 10 x 10 | \$4,995.00 | \$183.64 | \$5,777.93 | \$212.42 |
| 10 x 12 | \$5,395.00 | \$198.35 | \$6,213.93 | \$228.45 |
| 10 x 14 | \$6,245.00 | \$229.60 | \$7,140.43 | \$262.52 |
| 10 x 16 | \$6,495.00 | \$238.79 | \$7,412.93 | \$272.53 |
| 10 x 20 | \$7,495.00 | \$275.55 | \$8,502.93 | \$312.61 |
| 12 x 12 | \$6,445.00 | \$236.95 | \$7,301.16 | \$268.43 |
| 12 x 14 | \$7,245.00 | \$266.36 | \$8,165.16 | \$300.19 |
| 12 x 16 | \$7,595.00 | \$279.23 | \$8,543.16 | \$314.09 |
| 12 x 20 | \$8,695.00 | \$319.67 | \$9,731.16 | \$357.76 |
| 12 x 24 | \$9,795.00 | \$360.11 | \$10,919.16 | \$401.44 |
| 12 x 28 | \$10,995.00 | \$404.23 | \$12,215.16 | \$449.09 |
| 12 x 32 | \$12,245.00 | \$450.18 | \$13,565.16 | \$498.72 |

| WxL | LP | RTO | VINYL | RTO |
|---------|-------------|----------|-------------|----------|
| 12 x 36 | \$13,945.00 | \$512.68 | \$15,401.16 | \$566.22 |
| 12 x 40 | \$15,195.00 | \$558.64 | \$16,751.16 | \$615.85 |
| 14 x 16 | \$9,395.00 | \$345.40 | \$10,400.39 | \$382.37 |
| 14 x 20 | \$10,695.00 | \$393.20 | \$11,791.39 | \$433.51 |
| 14 x 24 | \$11,995.00 | \$440.99 | \$13,182.39 | \$484.65 |
| 14 x 28 | \$13,395.00 | \$492.46 | \$14,680.39 | \$539.72 |
| 14 x 32 | \$15,095.00 | \$554.96 | \$16,499.39 | \$606.60 |
| 14 x 36 | \$16,595.00 | \$610.11 | \$18,104.39 | \$665.60 |
| 14 x 40 | \$18,145.00 | \$667.10 | \$19,762.89 | \$726.58 |
| 16 x 20 | \$11,595.00 | \$426.29 | \$12,645.62 | \$464.91 |
| 16 x 24 | \$13,495.00 | \$496.14 | \$14,129.62 | \$519.47 |
| 16 x 28 | \$15,395.00 | \$565.99 | \$16,673.62 | \$613.00 |
| 16 x 32 | \$17,295.00 | \$635.85 | \$18,687.62 | \$687.04 |
| 16 x 36 | \$19,195.00 | \$705.70 | \$20,701.62 | \$761.09 |
| 16 x 40 | \$21,095.00 | \$775.55 | \$22,715.62 | \$835.13 |
| 16 x 44 | \$22,995.00 | \$845.40 | \$24,729.62 | \$909.18 |
| 16 x 48 | \$24,645.00 | \$906.07 | \$26,478.62 | \$973.48 |



• Black Roof • Driftwood Walls • Barn White Trim



• Charcoal Roof • Mist Walls • White Trim

DELUXE SERIES 

Gable Cottage Garage

Our beloved Gable Cottage Garage offers a charming style that complements any setting. It's an excellent choice for those seeking both functionality and a prestigious design. With 88.5" tall walls, it provides ample storage space too!

120 DAYS SAME AS CASH



**LP SMARTSIDING OR
VINYL 6" OVERHANGS
ON 85.5" TALL WALLS**



LIFETIME WARRANTY



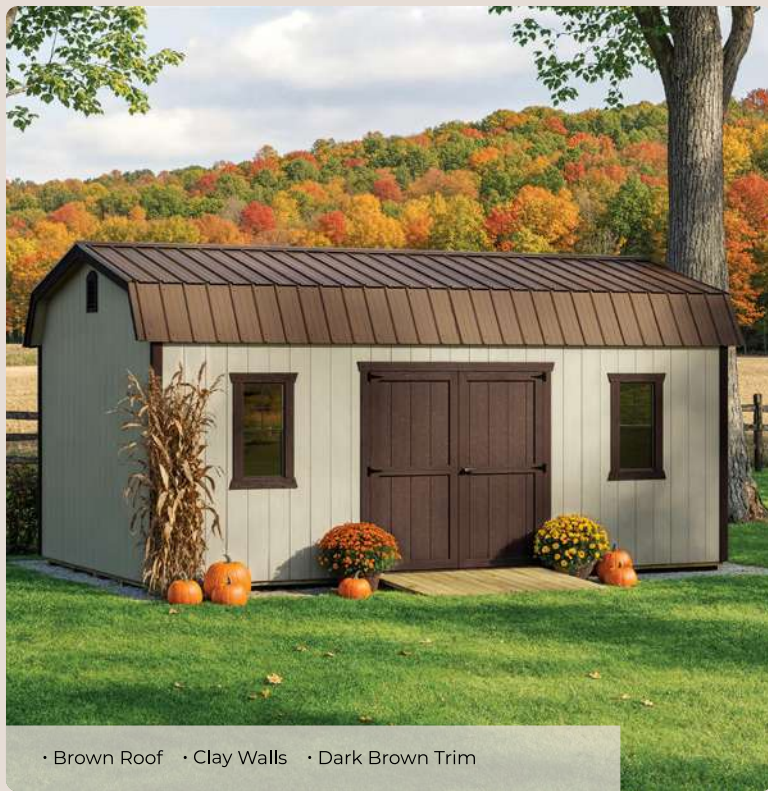
**MANY OPTIONS
AVAILABLE**

PRICE INCLUDES:

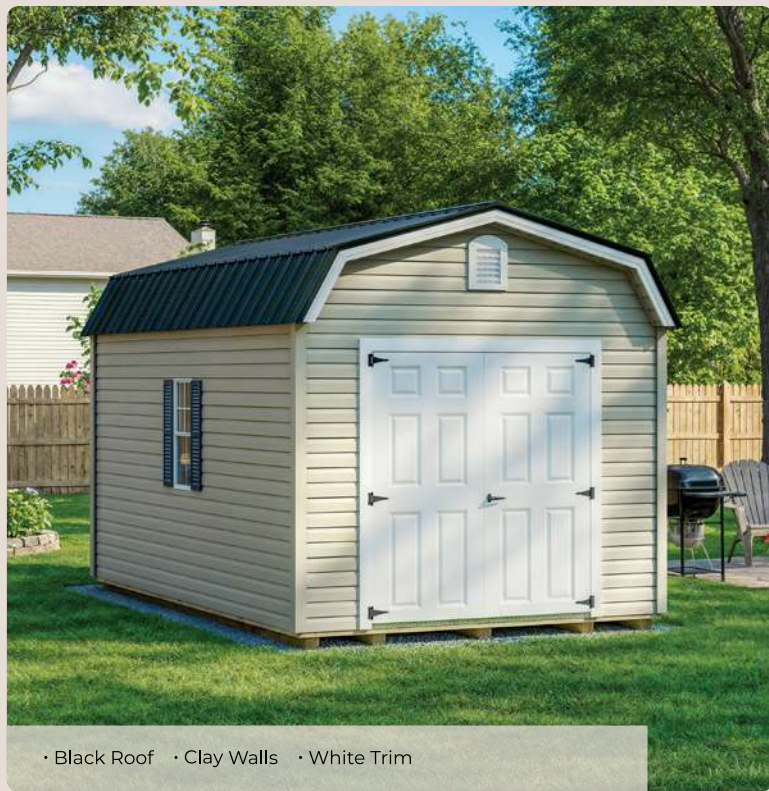
3' Entry Door, (1) Overhead Door, (2) 24" x 36" Windows
8" OC Floor Joists, 16" OC Wall Studs and Rafters.
Techshield included.

| WxL | LP | RTO | VINYL | RTO |
|----------------|-------------|----------|-------------|----------|
| 10 x 16 | \$7,993.00 | \$293.86 | \$8,686.93 | \$319.37 |
| 10 x 20 | \$9,019.00 | \$331.58 | \$9,802.93 | \$360.40 |
| 10 x 24 | \$10,095.00 | \$371.14 | \$10,973.43 | \$403.43 |
| 10 x 28 | \$11,371.00 | \$418.05 | \$12,361.93 | \$454.48 |
| 12 x 16 | \$9,113.80 | \$335.07 | \$9,837.96 | \$361.69 |
| 12 x 20 | \$10,245.00 | \$376.65 | \$11,057.16 | \$406.51 |
| 12 x 24 | \$11,376.20 | \$418.24 | \$12,276.36 | \$451.34 |
| 12 x 28 | \$12,607.40 | \$463.51 | \$13,603.56 | \$500.13 |
| 12 x 32 | \$13,888.60 | \$510.61 | \$14,984.76 | \$550.91 |
| 12 x 36 | \$15,619.80 | \$574.26 | \$16,851.96 | \$619.56 |
| 12 x 40 | \$16,901.00 | \$621.36 | \$18,233.16 | \$670.34 |
| 14 x 16 | \$10,934.60 | \$402.01 | \$11,715.99 | \$430.73 |
| 14 x 20 | \$12,271.00 | \$451.14 | \$13,143.39 | \$483.21 |

| WxL | LP | RTO | VINYL | RTO |
|----------------|-------------|----------|-------------|------------|
| 14 x 24 | \$13,607.40 | \$500.27 | \$14,570.79 | \$535.69 |
| 14 x 28 | \$15,043.80 | \$553.08 | \$16,105.19 | \$592.10 |
| 14 x 32 | \$16,780.20 | \$616.92 | \$17,960.59 | \$660.32 |
| 14 x 36 | \$18,316.60 | \$673.40 | \$19,601.99 | \$720.66 |
| 14 x 40 | \$19,903.00 | \$731.73 | \$21,296.89 | \$782.97 |
| 16 x 20 | \$13,187.25 | \$484.83 | \$14,013.87 | \$515.22 |
| 16 x 24 | \$14,626.90 | \$537.75 | \$15,537.52 | \$571.23 |
| 16 x 28 | \$17,066.55 | \$627.45 | \$18,121.17 | \$666.22 |
| 16 x 32 | \$19,006.20 | \$698.76 | \$20,174.82 | \$741.72 |
| 16 x 36 | \$20,945.85 | \$770.07 | \$22,228.47 | \$817.22 |
| 16 x 40 | \$22,885.50 | \$841.38 | \$24,282.12 | \$892.73 |
| 16 x 44 | \$24,825.15 | \$912.69 | \$26,335.77 | \$968.23 |
| 16 x 48 | \$26,514.80 | \$974.81 | \$28,124.42 | \$1,033.99 |



• Brown Roof • Clay Walls • Dark Brown Trim



• Black Roof • Clay Walls • White Trim

DELUXE SERIES



Gambrel Loft Barn

The Gambrel Loft Barn provides added style, and its loft and 87" tall walls increases the storage space for better organization.

120 DAYS SAME AS CASH



**LP SMARTSIDING OR
VINYL 6" OVERHANGS
ON 87" TALL WALLS**



LIFETIME WARRANTY



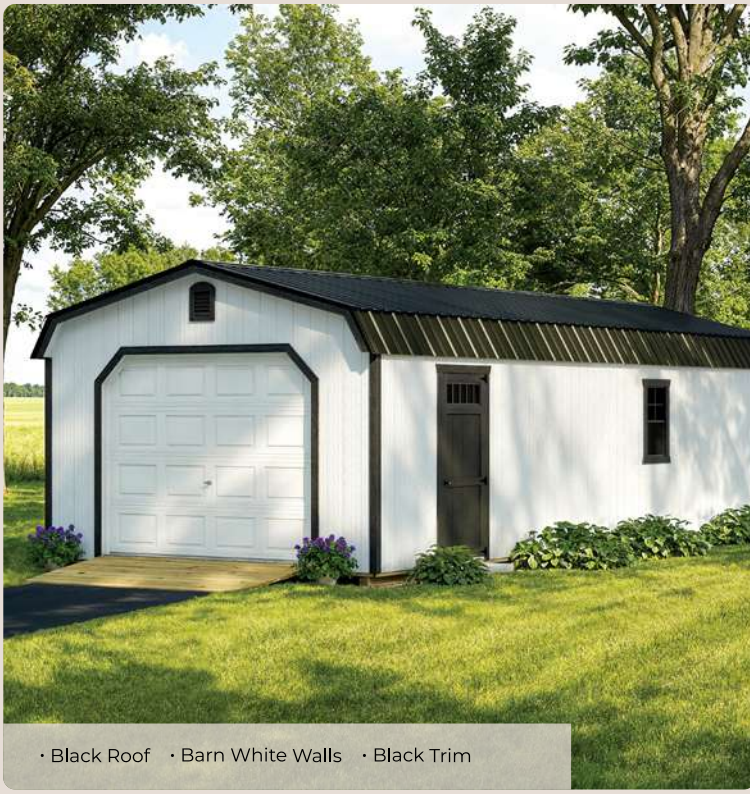
**MANY OPTIONS
AVAILABLE**

PRICE INCLUDES:

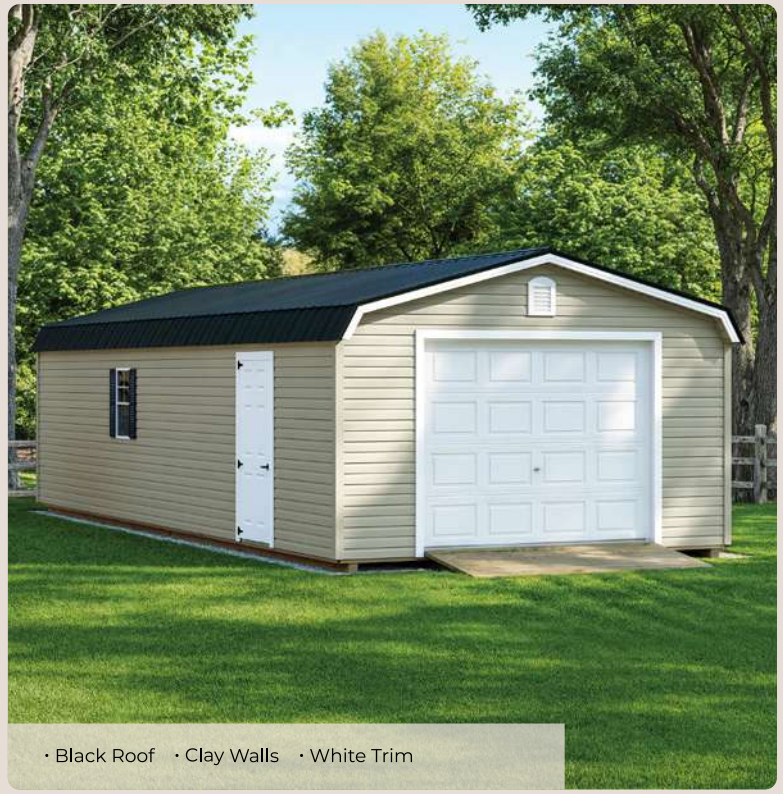
6' Double Doors, (2) 18" x 36" Windows, 16" OC Floor Joists, 16" OC Wall Studs and Rafters, (2) 4' Lofts. Techshield included.

| WxL | LP | RTO | VINYL | RTO |
|----------------|-------------|----------|-------------|----------|
| 8 x 8 | \$4,895.00 | \$179.96 | \$5,710.70 | \$209.95 |
| 8 x 10 | \$5,145.00 | \$189.15 | \$5,985.70 | \$220.06 |
| 8 x 12 | \$5,395.00 | \$198.35 | \$6,260.70 | \$230.17 |
| 8 x 14 | \$6,045.00 | \$222.24 | \$6,975.70 | \$256.46 |
| 8 x 16 | \$6,295.00 | \$231.43 | \$7,194.93 | \$264.52 |
| 10 x 10 | \$5,895.00 | \$216.73 | \$6,758.93 | \$248.49 |
| 10 x 12 | \$6,195.00 | \$227.76 | \$7,085.93 | \$260.51 |
| 10 x 14 | \$7,095.00 | \$260.85 | \$8,066.93 | \$296.58 |
| 10 x 16 | \$7,395.00 | \$271.88 | \$8,393.93 | \$308.60 |
| 10 x 20 | \$8,795.00 | \$323.35 | \$9,919.93 | \$364.70 |
| 12 x 12 | \$7,095.00 | \$260.85 | \$8,003.16 | \$294.23 |
| 12 x 14 | \$7,945.00 | \$292.10 | \$8,921.16 | \$327.98 |
| 12 x 16 | \$8,245.00 | \$303.13 | \$9,245.16 | \$339.90 |
| 12 x 20 | \$9,495.00 | \$349.08 | \$10,595.16 | \$389.53 |
| 12 x 24 | \$10,895.00 | \$400.55 | \$12,107.16 | \$445.12 |
| 12 x 28 | \$12,445.00 | \$457.54 | \$13,781.16 | \$506.66 |
| 12 x 32 | \$13,295.00 | \$488.79 | \$14,699.16 | \$540.41 |

| WxL | LP | RTO | VINYL | RTO |
|----------------|-------------|----------|-------------|------------|
| 12 x 36 | \$14,995.00 | \$551.29 | \$16,535.16 | \$607.91 |
| 12 x 40 | \$16,695.00 | \$613.79 | \$18,371.16 | \$675.41 |
| 14 x 16 | \$10,645.00 | \$391.36 | \$11,737.89 | \$431.54 |
| 14 x 20 | \$11,795.00 | \$433.64 | \$12,968.39 | \$476.78 |
| 14 x 24 | \$12,945.00 | \$475.92 | \$14,198.89 | \$522.02 |
| 14 x 28 | \$14,745.00 | \$542.10 | \$16,124.89 | \$592.83 |
| 14 x 32 | \$16,245.00 | \$597.24 | \$17,729.89 | \$651.83 |
| 14 x 36 | \$17,795.00 | \$654.23 | \$19,388.39 | \$712.81 |
| 14 x 40 | \$19,345.00 | \$711.21 | \$21,046.89 | \$773.78 |
| 16 x 20 | \$17,195.00 | \$632.17 | \$18,581.62 | \$683.15 |
| 16 x 24 | \$18,145.00 | \$667.10 | \$19,588.62 | \$720.17 |
| 16 x 28 | \$19,095.00 | \$702.02 | \$20,595.62 | \$757.19 |
| 16 x 32 | \$20,045.00 | \$736.95 | \$21,602.62 | \$794.21 |
| 16 x 36 | \$20,995.00 | \$771.88 | \$22,609.62 | \$831.24 |
| 16 x 40 | \$22,945.00 | \$843.57 | \$24,676.62 | \$907.23 |
| 16 x 44 | \$23,995.00 | \$882.17 | \$25,789.62 | \$948.15 |
| 16 x 48 | \$25,595.00 | \$940.99 | \$27,485.62 | \$1,010.50 |



• Black Roof • Barn White Walls • Black Trim



• Black Roof • Clay Walls • White Trim

DELUXE SERIES **D**

Gambrel Loft Garage

The Gambrel Loft Barn Garage combines a distinctive style with versatile functionality, making it a perfect fit for any environment. Ideal for those who value both practicality and elegant design, it features tall walls with overhead loft area that offer generous storage space.

120 DAYS SAME AS CASH



LP SMARTSIDING OR VINYL 6" OVERHANGS ON 87" TALL WALLS



LIFETIME WARRANTY



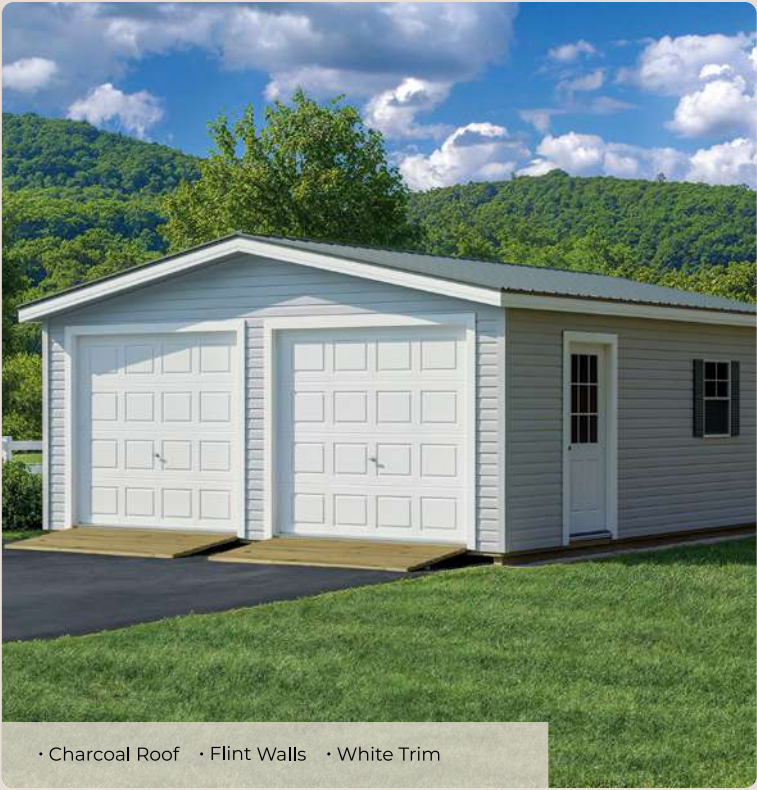
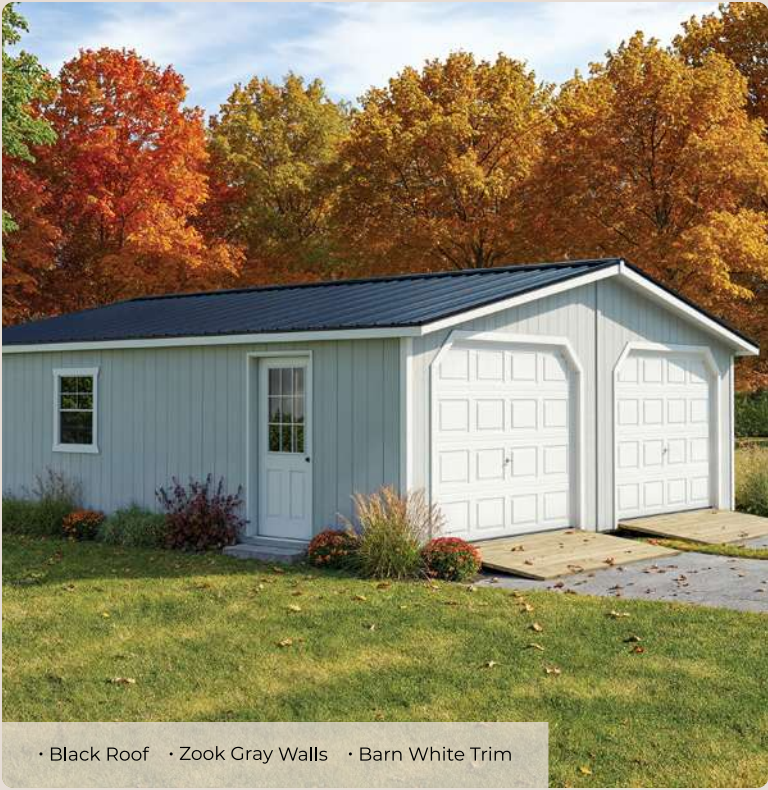
MANY OPTIONS AVAILABLE

PRICE INCLUDES:

3' Entry Door, (1) Overhead Door, (2) 24" x 36" Windows
8" OC Floor Joists, 16" OC Wall Studs and Rafters,
(1) 4' Loft. Techshield included.

| WxL | LP | RTO | VINYL | RTO |
|----------------|-------------|----------|-------------|----------|
| 10 x 16 | \$8,893.00 | \$326.95 | \$9,667.93 | \$355.44 |
| 10 x 20 | \$10,319.00 | \$379.38 | \$11,219.93 | \$412.50 |
| 10 x 24 | \$11,445.00 | \$420.77 | \$12,444.93 | \$457.53 |
| 10 x 28 | \$12,521.00 | \$460.33 | \$13,615.43 | \$500.57 |
| 12 x 16 | \$9,763.80 | \$358.96 | \$10,539.96 | \$387.50 |
| 12 x 20 | \$11,045.00 | \$406.07 | \$11,921.16 | \$438.28 |
| 12 x 24 | \$12,476.20 | \$458.68 | \$13,464.36 | \$495.01 |
| 12 x 28 | \$14,057.40 | \$516.82 | \$15,169.56 | \$557.70 |
| 12 x 32 | \$14,938.60 | \$549.21 | \$16,118.76 | \$592.60 |
| 12 x 36 | \$16,669.80 | \$612.86 | \$17,985.96 | \$661.25 |
| 12 x 40 | \$18,401.00 | \$676.51 | \$19,853.16 | \$729.90 |
| 14 x 16 | \$12,184.60 | \$447.96 | \$13,053.49 | \$479.91 |
| 14 x 20 | \$13,371.00 | \$491.58 | \$14,320.39 | \$526.48 |

| WxL | LP | RTO | VINYL | RTO |
|----------------|-------------|------------|-------------|------------|
| 14 x 24 | \$14,557.40 | \$535.20 | \$15,587.29 | \$573.06 |
| 14 x 28 | \$16,393.80 | \$602.71 | \$17,549.69 | \$645.21 |
| 14 x 32 | \$17,930.20 | \$659.20 | \$19,191.09 | \$705.55 |
| 14 x 36 | \$19,516.60 | \$717.52 | \$20,885.99 | \$767.87 |
| 14 x 40 | \$21,103.00 | \$775.85 | \$22,580.89 | \$830.18 |
| 16 x 20 | \$18,787.25 | \$690.71 | \$19,949.87 | \$733.45 |
| 16 x 24 | \$19,776.90 | \$727.09 | \$20,996.52 | \$771.93 |
| 16 x 28 | \$20,766.55 | \$763.48 | \$22,043.17 | \$810.41 |
| 16 x 32 | \$21,756.20 | \$799.86 | \$23,089.82 | \$848.89 |
| 16 x 36 | \$22,745.85 | \$836.24 | \$24,136.47 | \$887.37 |
| 16 x 40 | \$24,785.50 | \$911.23 | \$26,296.12 | \$966.77 |
| 16 x 44 | \$25,825.15 | \$949.45 | \$27,395.77 | \$1,007.20 |
| 16 x 48 | \$27,464.80 | \$1,009.74 | \$29,131.42 | \$1,071.01 |



Double Wide Garage

Our spacious Double Wide Garage stands out with its generous size, making it an ideal choice for those who need ample room for vehicles, storage, and more. Its expansive design ensures you have plenty of space to accommodate all your needs while maintaining a stylish and functional appearance.

120 DAYS SAME AS CASH



LP SMARTSIDING ON 89" TALL WALLS



LIFETIME WARRANTY



MANY OPTIONS AVAILABLE

PRICE INCLUDES:

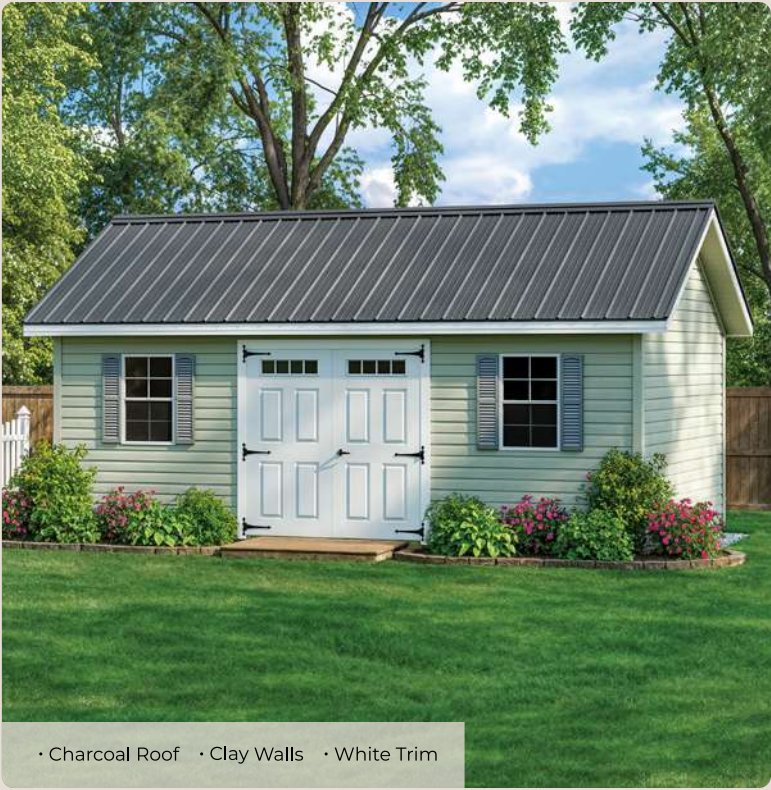
3' Pre-hung Entry Doors, (2) Overhead Doors, (2) 30" x 36" Windows 8" OC Floor Joists, 16" OC Wall Studs and Rafters. Techshield included.

| WxL | LP | RTO | VINYL | RTO |
|---------|-------------|------------|-------------|------------|
| 20 x 20 | \$21,649.00 | \$795.92 | \$22,914.76 | \$842.45 |
| 20 x 24 | \$23,249.00 | \$854.74 | \$24,610.76 | \$904.81 |
| 20 x 28 | \$25,195.00 | \$926.29 | \$26,673.52 | \$980.64 |
| 20 x 32 | \$26,849.00 | \$987.10 | \$28,426.76 | \$1,045.10 |
| 24 x 24 | \$25,895.00 | \$952.02 | \$27,415.52 | \$1,007.92 |
| 24 x 28 | \$28,295.00 | \$1,040.26 | \$29,959.52 | \$1,101.45 |
| 24 x 32 | \$30,445.00 | \$1,119.30 | \$32,238.52 | \$1,185.24 |
| 24 x 36 | \$32,479.00 | \$1,194.08 | \$34,394.56 | \$1,264.51 |
| 24 x 40 | \$35,599.00 | \$1,308.79 | \$37,701.76 | \$1,386.09 |

| WxL | LP | RTO | VINYL | RTO |
|---------|-------------|------------|-------------|------------|
| 24 x 44 | \$38,719.00 | \$1,423.49 | \$41,008.96 | \$1,507.68 |
| 24 x 48 | \$41,839.00 | \$1,538.20 | \$44,316.16 | \$1,629.27 |
| 28 x 28 | \$31,295.00 | \$1,150.55 | \$33,139.52 | \$1,218.36 |
| 28 x 32 | \$32,995.00 | \$1,213.05 | \$34,941.52 | \$1,284.61 |
| 28 x 36 | \$35,495.00 | \$1,304.96 | \$37,591.52 | \$1,382.04 |
| 28 x 40 | \$38,095.00 | \$1,400.55 | \$40,347.52 | \$1,483.36 |
| 28 x 44 | \$40,295.00 | \$1,481.43 | \$42,679.52 | \$1,569.10 |
| 28 x 48 | \$42,795.00 | \$1,573.35 | \$45,329.52 | \$1,666.53 |



• Black Roof • Galeforce Blue Walls • Barn White Trim



• Charcoal Roof • Clay Walls • White Trim

CLASSIC SERIES 

Classic Chalet

The Classic Chalet is a distinction of its own. A steep roof and Swiss character plus a variety of elite design options makes our chalet a truly elegant addition to your yard.

120 DAYS SAME AS CASH

Distinct Swiss Character



LP SMARTSIDING OR
VINYL 79" TALL WALLS



LIFETIME WARRANTY

PRICE INCLUDES:

6' Double Doors, (2) 24" x 36" Windows,
16" OC Floor Joists, 16" OC Wall Studs and Rafters.
Techshield included.

| WxL | LP | RTO | VINYL | RTO |
|---------|------------|----------|------------|----------|
| 8 x 8 | \$4,415.00 | \$162.32 | \$5,177.90 | \$190.36 |
| 8 x 10 | \$4,815.00 | \$177.02 | \$5,617.90 | \$206.54 |
| 8 x 12 | \$5,315.00 | \$195.40 | \$6,167.90 | \$226.76 |
| 8 x 14 | \$5,915.00 | \$217.46 | \$6,827.90 | \$251.03 |
| 8 x 16 | \$6,265.00 | \$230.33 | \$7,212.90 | \$265.18 |
| 10 x 10 | \$5,615.00 | \$206.43 | \$6,452.11 | \$237.21 |
| 10 x 12 | \$6,165.00 | \$226.65 | \$7,051.61 | \$259.25 |
| 10 x 14 | \$6,915.00 | \$254.23 | \$7,869.11 | \$289.31 |
| 10 x 16 | \$7,365.00 | \$270.77 | \$8,359.61 | \$307.34 |
| 10 x 20 | \$8,665.00 | \$318.57 | \$9,776.61 | \$359.43 |

| WxL | LP | RTO | VINYL | RTO |
|---------|-------------|----------|-------------|----------|
| 12 x 12 | \$7,165.00 | \$263.42 | \$8,080.32 | \$297.07 |
| 12 x 14 | \$7,915.00 | \$290.99 | \$8,890.32 | \$326.85 |
| 12 x 16 | \$8,315.00 | \$305.70 | \$9,322.32 | \$342.73 |
| 12 x 20 | \$9,565.00 | \$351.65 | \$10,672.32 | \$392.36 |
| 12 x 24 | \$11,065.00 | \$406.80 | \$12,292.32 | \$451.92 |
| 12 x 28 | \$12,515.00 | \$460.11 | \$13,858.32 | \$509.50 |
| 12 x 32 | \$14,115.00 | \$518.93 | \$15,586.32 | \$573.03 |
| 12 x 36 | \$15,715.00 | \$577.76 | \$17,314.32 | \$636.56 |
| 12 x 40 | \$17,315.00 | \$636.58 | \$19,042.32 | \$700.09 |



• Charcoal Roof • Stoltzfus Almond Walls • Barn White Trim



• Light Gray Roof • Olive Walls • White Trim

CLASSIC SERIES



Classic Quaker

The Classic Quaker is a charming blend of form and function. The Quaker's Classic style accents your backyard or estate with elite design details.

120 DAYS SAME AS CASH

Charming Elite Design



LP SMARTSIDING OR VINYL
93⁷/₈" TALL FRONT WALL,
76.5" TALL BACK WALL



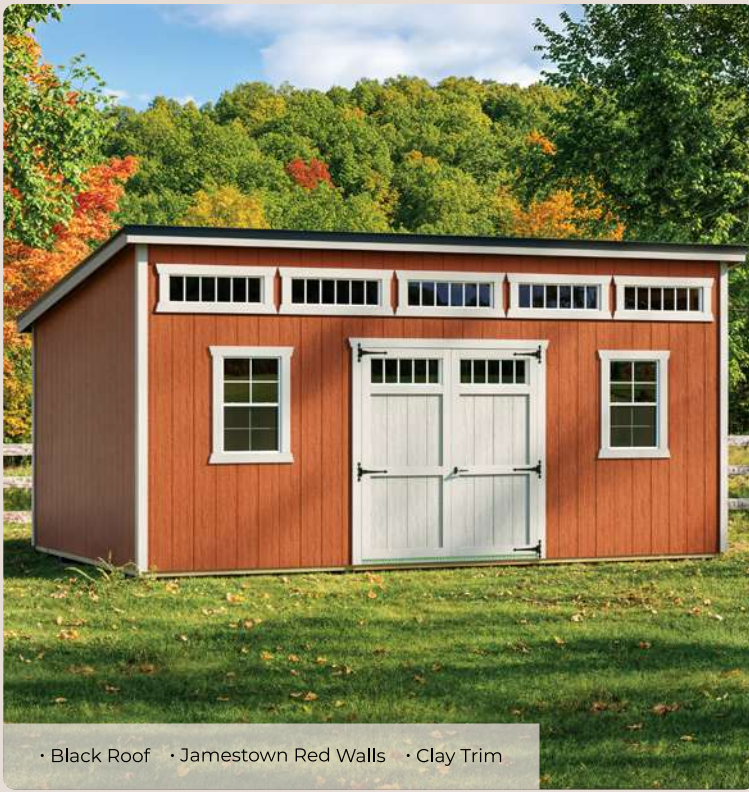
LIFETIME WARRANTY

PRICE INCLUDES:

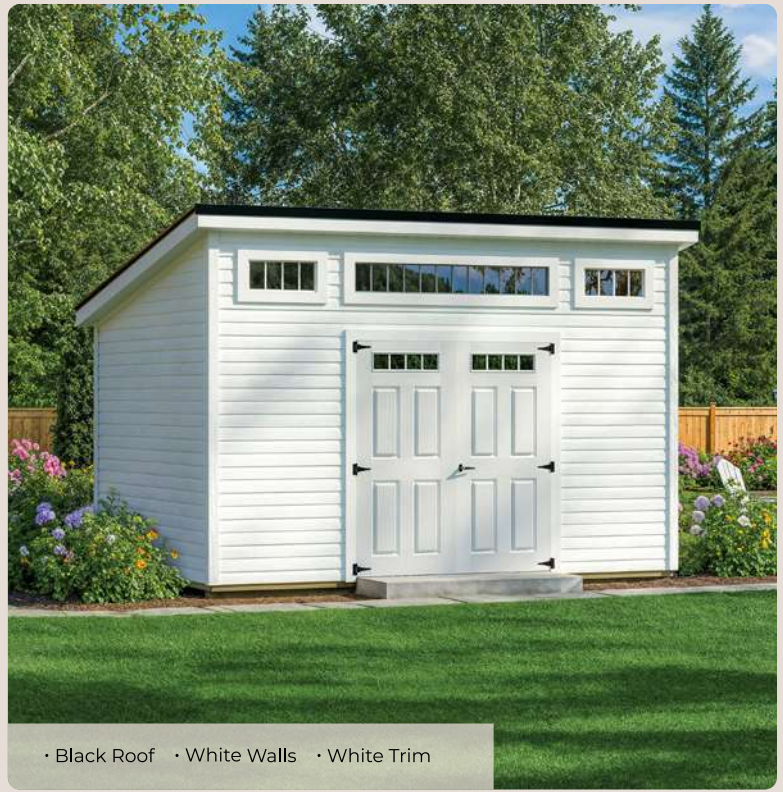
6' Double Doors, (2) 18" x 36" Windows,
16" OC Floor Joists, 16" OC Wall Studs and Rafters.
Techshield included.

| WxL | LP | RTO | VINYL | RTO |
|---------|------------|----------|------------|----------|
| 8 x 8 | \$4,395.00 | \$161.58 | \$5,157.90 | \$189.63 |
| 8 x 10 | \$4,795.00 | \$176.29 | \$5,597.90 | \$205.81 |
| 8 x 12 | \$5,395.00 | \$198.35 | \$6,257.90 | \$230.07 |
| 8 x 14 | \$5,795.00 | \$213.05 | \$6,697.90 | \$246.25 |
| 8 x 16 | \$6,195.00 | \$227.76 | \$7,137.90 | \$262.42 |
| 10 x 10 | \$5,545.00 | \$203.86 | \$6,377.61 | \$234.47 |
| 10 x 12 | \$6,095.00 | \$224.08 | \$6,977.11 | \$256.51 |
| 10 x 14 | \$6,895.00 | \$253.49 | \$7,849.11 | \$288.57 |
| 10 x 16 | \$7,345.00 | \$270.04 | \$8,339.61 | \$306.60 |
| 10 x 20 | \$8,695.00 | \$319.67 | \$9,811.11 | \$360.70 |

| WxL | LP | RTO | VINYL | RTO |
|---------|-------------|----------|-------------|----------|
| 12 x 12 | \$7,145.00 | \$262.68 | \$8,060.32 | \$296.34 |
| 12 x 14 | \$7,995.00 | \$293.93 | \$8,978.32 | \$330.09 |
| 12 x 16 | \$8,295.00 | \$304.96 | \$9,302.32 | \$342.00 |
| 12 x 20 | \$9,595.00 | \$352.76 | \$10,706.32 | \$393.61 |
| 12 x 24 | \$11,045.00 | \$406.07 | \$12,272.32 | \$451.19 |
| 12 x 28 | \$12,495.00 | \$459.38 | \$13,838.32 | \$508.76 |
| 12 x 32 | \$14,095.00 | \$518.20 | \$15,566.32 | \$572.29 |
| 12 x 36 | \$15,695.00 | \$577.02 | \$17,294.32 | \$635.82 |
| 12 x 40 | \$17,295.00 | \$635.85 | \$19,022.32 | \$699.35 |



• Black Roof • Jamestown Red Walls • Clay Trim



• Black Roof • White Walls • White Trim

CLASSIC SERIES



Classic Studio

Single-slant roof with a 88.5" back wall and overhangs all around for a classy, modern look!

120 DAYS SAME AS CASH



LP SMARTSIDING OR VINYL



LIFETIME WARRANTY

PRICE INCLUDES:

6' Double Doors, Transom Windows on front wall, 16" OC Floor Joists, 16" OC Wall Studs and Rafters. Techshield included.

| WxL | LP | RTO | VINYL | RTO |
|----------------|------------|----------|------------|----------|
| 8 x 8 | \$4,366.00 | \$160.51 | \$4,930.00 | \$181.25 |
| 8 x 10 | \$4,790.00 | \$176.10 | \$5,381.50 | \$197.85 |
| 8 x 12 | \$5,140.00 | \$188.97 | \$5,766.50 | \$212.00 |
| 8 x 14 | \$5,915.00 | \$217.46 | \$6,609.00 | \$242.98 |
| 8 x 16 | \$6,289.00 | \$231.21 | \$7,015.50 | \$257.92 |
| 10 x 10 | \$5,540.00 | \$203.68 | \$6,162.55 | \$226.56 |
| 10 x 12 | \$5,920.00 | \$217.65 | \$6,576.75 | \$241.79 |
| 10 x 14 | \$6,840.00 | \$251.47 | \$7,570.55 | \$278.33 |
| 10 x 16 | \$7,189.00 | \$264.30 | \$7,946.55 | \$292.15 |
| 10 x 20 | \$8,438.00 | \$310.22 | \$9,294.55 | \$341.71 |
| 12 x 12 | \$7,040.00 | \$258.82 | \$7,738.60 | \$284.51 |
| 12 x 14 | \$7,990.00 | \$293.75 | \$8,756.60 | \$321.93 |
| 12 x 16 | \$8,364.00 | \$307.50 | \$9,156.60 | \$336.64 |

| WxL | LP | RTO | VINYL | RTO |
|----------------|-------------|----------|-------------|----------|
| 12 x 20 | \$9,688.00 | \$356.18 | \$10,574.60 | \$388.77 |
| 12 x 24 | \$10,962.00 | \$403.01 | \$11,938.60 | \$438.92 |
| 12 x 28 | \$12,162.00 | \$447.13 | \$13,234.60 | \$486.57 |
| 12 x 32 | \$13,986.00 | \$514.19 | \$15,184.60 | \$558.26 |
| 12 x 36 | \$15,638.00 | \$574.93 | \$16,960.60 | \$623.55 |
| 12 x 40 | \$17,442.00 | \$641.25 | \$18,889.00 | \$694.45 |
| 14 x 16 | \$9,989.00 | \$367.24 | \$10,824.65 | \$397.97 |
| 14 x 20 | \$11,438.00 | \$420.51 | \$12,364.65 | \$454.58 |
| 14 x 24 | \$12,887.00 | \$473.79 | \$13,904.65 | \$511.20 |
| 14 x 28 | \$14,287.00 | \$525.26 | \$15,402.65 | \$566.27 |
| 14 x 32 | \$16,186.00 | \$595.07 | \$17,417.15 | \$640.34 |
| 14 x 36 | \$17,818.00 | \$655.07 | \$19,156.25 | \$704.27 |
| 14 x 40 | \$19,587.00 | \$720.11 | \$21,031.65 | \$773.22 |



• Black Roof • Red Cedar Stain

PAVILION 

Timber Frame Pavilions

Our Pavilion features rustic construction from native New York lumber, and creates the ideal outdoor space for your family and friends to gather and relax.



RUSTIC NATIVE
NEW YORK TIMBER

PRICE INCLUDES:

(2) 4' Openings, railings all around

120 DAYS SAME AS CASH

| WxL | PRICE | RTO |
|---------|------------|----------|
| 8 x 8 | \$2,845.00 | \$104.60 |
| 8 x 10 | \$3,195.00 | \$117.46 |
| 8 x 12 | \$3,545.00 | \$130.33 |
| 8 x 14 | \$3,895.00 | \$143.20 |
| 8 x 16 | \$4,295.00 | \$157.90 |
| 10 x 10 | \$3,545.00 | \$130.33 |
| 10 x 12 | \$3,945.00 | \$145.04 |
| 10 x 14 | \$4,595.00 | \$168.93 |
| 10 x 16 | \$4,995.00 | \$183.64 |

| WxL | PRICE | RTO |
|---------|-------------|----------|
| 10 x 20 | \$6,195.00 | \$227.76 |
| 12 x 12 | \$4,595.00 | \$168.93 |
| 12 x 16 | \$5,595.00 | \$205.70 |
| 12 x 20 | \$6,995.00 | \$257.17 |
| 12 x 24 | \$8,395.00 | \$308.64 |
| 12 x 28 | \$9,495.00 | \$349.08 |
| 12 x 36 | \$11,995.00 | \$440.99 |
| 14 x 20 | \$8,095.00 | \$297.61 |
| 14 x 24 | \$8,995.00 | \$330.70 |

| WxL | PRICE | RTO |
|---------|-------------|----------|
| 14 x 28 | \$10,445.00 | \$384.01 |
| 14 x 32 | \$11,945.00 | \$439.15 |
| 14 x 40 | \$14,845.00 | \$545.77 |
| 16 x 32 | \$12,345.00 | \$453.86 |
| 16 x 36 | \$13,845.00 | \$509.01 |
| 16 x 40 | \$15,545.00 | \$571.51 |
| 16 x 44 | \$17,295.00 | \$635.85 |
| 16 x 48 | \$18,595.00 | \$683.64 |



• Charcoal Roof • Primed walls and trim

BETTER BUY SERIES **•B•**

Utility

The Better Buy Utility provides affordable storage space for almost anything you can think of. High quality craftsmanship in a simple package ensures that you get your money's worth.

120 DAYS SAME AS CASH



LP SMARTSIDING ON 75" TALL WALLS



LIMITED OPTIONS AVAILABLE

PRICE INCLUDES:

6' Double Doors, (1) 24" x 36" Window, 5/8" Plywood floor, 16" OC Floor Joists, 24" OC Wall Studs and Rafters

| WxL | PRICE | RTO |
|---------|------------|----------|
| 8 x 8 | \$3,095.00 | \$113.79 |
| 8 x 10 | \$3,245.00 | \$119.30 |
| 8 x 12 | \$3,445.00 | \$126.65 |
| 8 x 16 | \$4,095.00 | \$150.55 |
| 10 x 10 | \$3,695.00 | \$135.85 |
| 10 x 12 | \$3,895.00 | \$143.20 |
| 10 x 14 | \$4,445.00 | \$163.42 |
| 10 x 16 | \$4,595.00 | \$168.93 |



• Black Roof • Primed walls and trim

BETTER BUY SERIES **B**

Lofted Barn

Spacious and affordable! The Lofted Barn has all the space you need for stowing your stuff out of the weather and comes with a loft for even more usable space inside.

120 DAYS SAME AS CASH



LP SMARTSIDING ON 75" TALL WALLS OR VINYL



LIMITED OPTIONS AVAILABLE

PRICE INCLUDES:
6' Double Doors, (1) 24" x 36" Window,
(1) 4' Loft, 16" OC Floor Joists, 5/8" Plywood floor,
24" OC Wall Studs and Rafters

| WxL | PRICE | RTO |
|---------|------------|----------|
| 8 x 8 | \$3,745.00 | \$137.68 |
| 8 x 10 | \$3,945.00 | \$145.04 |
| 8 x 12 | \$4,095.00 | \$150.55 |
| 8 x 16 | \$4,795.00 | \$176.29 |
| 10 x 10 | \$4,395.00 | \$161.58 |
| 10 x 12 | \$4,595.00 | \$168.93 |
| 10 x 14 | \$5,245.00 | \$192.83 |
| 10 x 16 | \$5,395.00 | \$198.35 |

Vinyl Buildings

Heritage Structures vinyl models are among the best on the market. Durable, attractive, and functional, these buildings are sure to last a lifetime. Here are some of the advantages vinyl offers to you.



- **Vinyl is *Final***

Vinyl is one of the best materials to build a shed with. It is durable and strong enough to last a lifetime.

- **Maintenance Free**

Compared to wood buildings, vinyl is maintenance free. It will not need to be stained, sealed, treated, or ever need routine care. A vinyl building will always look like it did the day it was built, and if it gets dirty, it can simply be pressure washed.

- **Investment Value**

Since a vinyl building will always look brand new, it is the perfect way to increase your property value. A vinyl barn or shed will freshen up your yard and add storage space while looking beautiful.

- **Color Match to Your Home**

Thanks to the coloring capabilities of vinyl, it has never been easier to match a portable building to your home. Our vinyl buildings come in a wide variety of colors ranging from gray to red and everything in between. Matching to your home is not only visually appealing, but can also be required by your homeowners' association.



Seamless & Outstanding

"I must say that coming from the NYC environment the service at Heritage has been seamless and outstanding. Irvin is simply phenomenal. He is naturally kind, knowledgeable, resourceful, patient and I can go on and on. I am so happy to have chosen Heritage from the other companies I worked with to make my final decision."

FAREENA SPENCER

Door Options

PREHUNG



36" Prehung House Door Inswing
\$545



36" 9-Lite Prehung House Door Inswing
\$595

Magnetic Door Stop
\$39

SMART SIDE



3' Smartside Door
\$225



3' Smartside Transom Door
\$374



6' Double Smartside Door
\$400



6' Double Smartside Transom Door
\$698

GARAGE



Panel Door
8x7 or 9x7
Uninsulated - **\$1,400**
Insulated - **\$1,800**



Panel Door With Windows
8x7 or 9x7
Uninsulated - **\$1,950**
Insulated - **\$2,350**



Roll-Up Door
8x7 or 9x7
\$1,200

RAMPAGE



6x6 Insulated - **\$1,450**
6x7 Insulated - **\$1,450**

Durable, fold-down utility with a beautiful look

FIBERGLASS



3' Fiberglass Door
\$350



3' 4-lite Fiberglass Door
\$550



3' 9-lite Fiberglass Door
\$550



3' 11-lite Fiberglass Door
\$550



6' Double Fiberglass Door
\$600



6' 15-lite Double Fiberglass Door
\$995



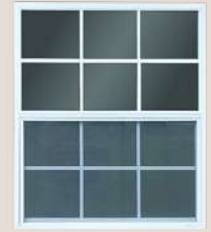
3' Prairy Style Fiberglass Door
\$550

Other Options

WINDOWS

Vertical Slider Windows w/screens

- 18"x27" \$149
- 18"x36" \$159
- 24"x36" \$169
- 30"x36" \$229
- 24"x36" Insulated \$279
- 30"x36" Insulated \$319



PORCHES

- 4' Cathedral Porch \$900
- 8' Cathedral Porch \$1,200
- 4' End Porch \$650
- 8' End Porch \$950
- 4' Side Porch \$950
- 4 x 8 Corner Porch \$550
- White Vinyl Railing (per section) \$300
- Vinyl Porch Flooring (per sq. ft.) \$15
- 6' Cathedral Porch \$1,050
- 6' End Porch \$800

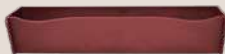
INTERIOR

- Poly Floor Shield (per sq. ft.) \$4.75
- Loft Shelf (per linear ft.) \$60
- 2' Work Bench (per linear ft.) \$12
- 1' Shelf (per linear ft.) \$6.50
- 3' Shelf (per linear ft.) \$18
- Pegboard (per sq. ft.) \$3
- Loft Ladder \$100

EXTERIOR

- Two-Tone Skirting \$7.50 per linear foot
- 3rd Exterior Color for Doors or Trim \$199
- Elite Design Upgrade \$595

Flower Box \$99



Vents

- Deluxe Rounded Top Gable Vent \$39
- Extra 8x16 Vent \$25
- Ridge Vent (per linear ft.) \$11.50



Shutters (per pair) \$99

Ramps

- 6' Ramp \$225
- 8' Ramp \$300
- 9' Ramp \$300

Custom Paint Color Upgrade \$299

Premium Metal Color Upgrade \$300

Transom Windows

- 18"x10" \$149
- 24"x10" \$149
- 30"x10" \$149
- 36"x10" \$149
- 60"x10" \$249
- 72"x10" \$249
- Octagon \$199



ELECTRICAL

** Electrical not available on better buy series*

Light Switch \$65

Interior Outlet \$80

Interior Light \$125

Exterior Light \$225

100-Amp Panel \$225

SHUTTER STYLES



Louvered



Raised Panel



Wooden z-Style



Wooden Slat Type

INSULATION AND STRUCTURAL

- Bubble Insulation on Floor (per sq. ft.) \$2.25
- 1.5" Spray Foam Insulated Floor or walls (per sq. ft.) \$4
- 12" OC floor Joists (per sq. ft.) \$0.55
- 1.5" Thick Double Layer Floor (per sq. ft.) \$3.69
- 8' Transom Dormer \$1,795
- 12' Transom Dormer \$1,995
- Gable Dormer \$1,500
- 6" Gable End Overhang \$450
- Tall Wall Upgrade (percent of Building Price) 7%
- Anchor \$99

30" long with anchor bracket



LEVELING AND INSTALL

Block Leveling Packages (Covers up to 8" off level)

- 8' Wide Shed \$150
- 10' Wide Shed \$195
- 12' Wide Shed \$395
- 14' Wide Shed \$495
- 16' Wide Shed \$595

On Site Build Option

- Minimum \$1,000 25% of building cost



TEN UNIQUE NO-RISK REASONS TO CHOOSE OUR STRUCTURES

1. Lifetime Warranty

Covers everything to give you quality you'll cherish for years.

2. Free Site Check

No need to worry, we don't ask for money or deposits before a site check (if needed).

3. Design Assistance

No pressure, we simply help you get exactly what you need. We provide your town with any insurance proof they need for you to get a permit.

4. Site Prep

We provide a one stop shop for your structure *and* its foundation or leveling service.

5. Lowest Rates

Zero down Finance with super low monthly rates; or, only one month's rent down on rent to own with 120 days same as cash contracts.

6. Architectural Design

Better overall appeal with proper roof pitches and balanced wall height.

7. Quality Materials

We use only leading material, such as our LuxGuard flooring, non-fading metal roof, and heavier diamond plate threshold.

8. Pricing

As a **builder direct** source you get a competitively priced structure, the highest quality at the right price.

9. Professional Delivery

We place your structure professionally without creating a mess, using state-of-the art equipment, all at no extra charge.

10. Prompt Service

Many sheds in stock for quick delivery or custom design: our focus is on remarkable service that is hard to find these days! We want you to love your experience so much that you will recommend us to friends and family.

Color Options

Note: All printed colors on this page may vary from actual samples.

Smartside



Stain Colors



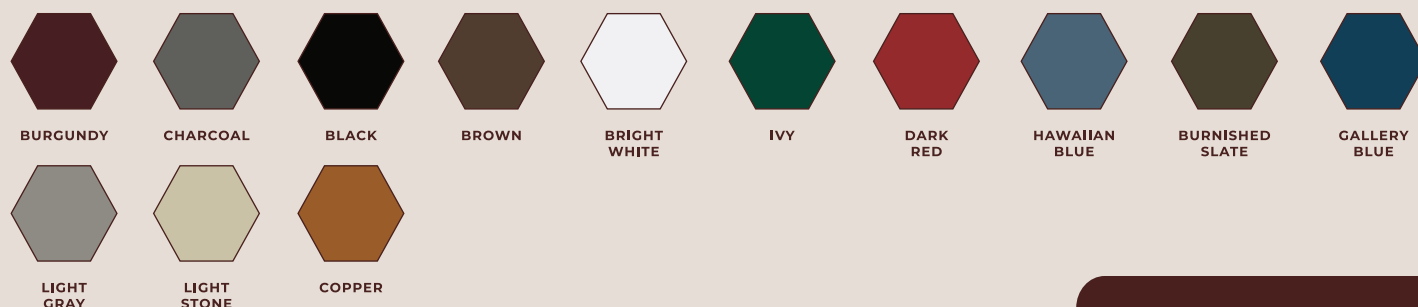
Vinyl Siding



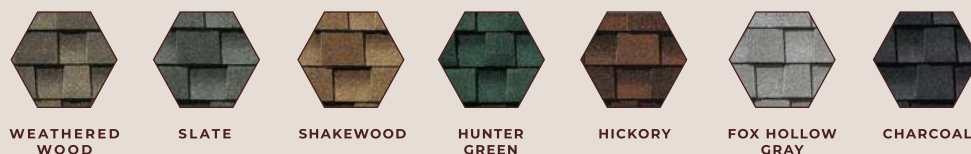
Vinyl Shutters & Flower Boxes



Metal Roof



Shingles



PAINTING & STAINING

Our treated SmartSide panel comes factory primed in a tan color. This color is free on all styles of our buildings.

Select one color of paint or stain, and add an optional second color for trim and doors at no charge on most units.

Custom Paint Color We'll match any color! Sherwin Williams A100, includes paint & application.

CUSTOM COLORS AVAILABLE

Custom paints, stains, vinyl siding, trim, and accessories to match your home exactly!

Additional costs apply; based on building size and product cost.

TechShield Roof



WITHOUT LP® TECHSHIELD® RADIANT BARRIER SHEATHING

As the summer sun beats down, radiant heat transferred through conventional roof sheathing panels turns the shed into an oven.



WITH LP® TECHSHIELD® RADIANT BARRIER SHEATHING

LP® TechShield® Radiant Barrier Sheathing blocks up to 97% of the radiant heat in the panel from entering the shed, reducing shed temperatures by as much as 30°F.

TechShield Walls

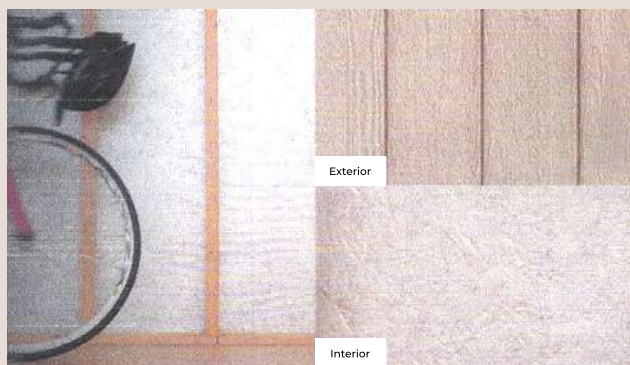
LP® SMARTSIDE® PANEL SIDING WITH SILVERTECH®

Innovative LP SmartSide Panels with SilverTech feature all of the benefits of LP SmartSide Panel Siding plus a radiant barrier for a finished look that resists flaking and peeling. These panels also help reduce the sun's radiant energy through the panels. It's an ideal choice for sheds and workshops to help keep stored items cooler and brighten the interior.

- Uniquely designed for use in outdoor structures
- Highly reflective surface helps brighten the interior
- Helps keep the shed cooler for storing items or working inside
- Label-free, professional-grade finish resists peeling and flaking
- Offers a premium appearance on the inside
- Treated engineered wood technology for long-lasting performance in tough climates
- SmartGuard® treatment for protection against rot and termites
- 5-year, 100% labor and replacement feature**
- 50-year prorated, limited warranty on substrate**

LP® WARRANTY

LP Smartside is warrantied for 50 years for fungal degradation; buckling; and cracking, peeling, separating, chipping, flaking, or rupturing of the resin-impregnated surface.



ONLY **\$2.45** A SQ FOOT
FOR THIS POPULAR UPGRADE!

» **Better than plywood! It won't mold or yellow.
And it doesn't have harmful treatments.**

Site Evaluation & Preparation

**A PROPERLY PREPARED SITE ENSURES
THE LONGEVITY OF YOUR STRUCTURE!**

Instructions for anyone doing stone sites:

1. Stone must be 100% level, or it's useless to have it installed.
2. For delivery purposes, pad must be kept as low to the ground as possible.
3. Stone site should be 2' longer and 2' wider than shed size.
4. Stone should be compacted or tamped down, not just loose.
5. Stone should be washed #1 limestone or #1 crusher run limestone, not loose, round pebbles.

Is my site close to level?

A level site is the most critical requirement for years of service and enjoyment of your shed.

1. Stake out your site (a stake in each corner 1 ft. longer and wider than the building size).
2. Attach a string to the bottom of the stake that is at the highest elevation.
3. Attach level to string and make string level. Tie to stake at lowest elevation. Measure the distance from the string to the ground. This will tell you how much off of level your ground is.



**SHED DELIVERED
ON UNPREPARED SITE**



**STRUCTURE DELIVERED & PLACED
ON PROFESSIONAL STONE PAD**

**IF YOU DON'T HAVE A STONE SITE,
PLEASE ASK ABOUT OUR LEVELING SERVICE!**



See next page for stone pad pricing.

Gravel Pad Pricing

| SHED SIZE | STONE PAD SIZE | STONE BASE | TIMBERED SITE |
|-----------|----------------|------------|---------------|
| 8 x 8 | 10 x 10 | \$1,625.00 | \$2,225.00 |
| 8 x 10 | 10 x 12 | \$1,660.00 | \$2,275.00 |
| 8 x 12 | 10 x 14 | \$1,830.00 | \$2,450.00 |
| 8 x 14 | 10 x 16 | \$1,990.00 | \$2,725.00 |
| 8 x 16 | 10 x 18 | \$2,015.00 | \$2,785.00 |
| 8 x 20 | 10 x 22 | \$2,175.00 | \$3,075.00 |
| 10 x 10 | 12 x 12 | \$1,775.00 | \$2,460.00 |
| 10 x 12 | 12 x 14 | \$1,865.00 | \$2,595.00 |
| 10 x 14 | 12 x 16 | \$2,025.00 | \$2,795.00 |
| 10 x 16 | 12 x 18 | \$2,070.00 | \$2,850.00 |
| 10 x 18 | 12 x 20 | \$2,230.00 | \$3,115.00 |
| 10 x 20 | 12 x 22 | \$2,405.00 | \$3,305.00 |
| 10 x 24 | 12 x 26 | \$2,635.00 | \$3,630.00 |
| 12 x 12 | 14 x 14 | \$1,890.00 | \$2,670.00 |
| 12 x 14 | 14 x 16 | \$2,060.00 | \$2,895.00 |
| 12 x 16 | 14 x 18 | \$2,140.00 | \$3,015.00 |
| 12 x 18 | 14 x 20 | \$2,305.00 | \$3,265.00 |
| 12 x 20 | 14 x 22 | \$2,455.00 | \$3,435.00 |
| 12 x 24 | 14 x 26 | \$2,660.00 | \$3,720.00 |
| 12 x 28 | 14 x 30 | \$2,825.00 | \$4,175.00 |
| 12 x 32 | 14 x 34 | \$3,145.00 | \$4,595.00 |
| 12 x 36 | 14 x 38 | \$3,435.00 | \$4,990.00 |
| 12 x 40 | 14 x 42 | \$3,745.00 | \$5,515.00 |
| 14 x 16 | 16 x 18 | \$2,185.00 | \$3,130.00 |
| 14 x 20 | 16 x 22 | \$2,440.00 | \$3,500.00 |
| 14 x 24 | 16 x 26 | \$2,840.00 | \$3,885.00 |
| 14 x 28 | 16 x 30 | \$3,190.00 | \$4,380.00 |
| 14 x 32 | 16 x 34 | \$3,525.00 | \$4,845.00 |
| 14 x 36 | 16 x 38 | \$3,865.00 | \$5,455.00 |
| 14 x 40 | 16 x 42 | \$4,225.00 | \$5,935.00 |

| SHED SIZE | STONE PAD SIZE | STONE BASE | TIMBERED SITE |
|-----------|----------------|-------------|---------------|
| 14 x 44 | 16 x 46 | \$4,600.00 | \$6,415.00 |
| 14 x 48 | 16 x 50 | \$4,960.00 | \$6,895.00 |
| 16 x 20 | 18 x 22 | \$2,740.00 | \$4,140.00 |
| 16 x 24 | 18 x 26 | \$3,130.00 | \$4,500.00 |
| 16 x 28 | 18 x 30 | \$3,565.00 | \$5,110.00 |
| 16 x 32 | 18 x 34 | \$3,990.00 | \$5,580.00 |
| 16 x 36 | 18 x 38 | \$4,385.00 | \$6,180.00 |
| 16 x 40 | 18 x 42 | \$4,805.00 | \$6,725.00 |
| 16 x 44 | 18 x 46 | \$5,180.00 | \$7,295.00 |
| 16 x 48 | 18 x 50 | \$5,555.00 | \$7,830.00 |
| 20 x 20 | 22 x 22 | \$4,250.00 | - |
| 20 x 24 | 22 x 26 | \$4,815.00 | - |
| 20 x 28 | 22 x 30 | \$5,425.00 | - |
| 20 x 32 | 22 x 34 | \$5,905.00 | - |
| 20 x 36 | 22 x 38 | \$6,520.00 | - |
| 20 x 40 | 22 x 42 | \$6,925.00 | - |
| 24 x 24 | 26 x 26 | \$6,305.00 | - |
| 24 x 28 | 26 x 30 | \$6,920.00 | - |
| 24 x 32 | 26 x 34 | \$7,540.00 | - |
| 24 x 36 | 26 x 38 | \$8,165.00 | - |
| 24 x 40 | 26 x 42 | \$8,736.00 | - |
| 24 x 44 | 26 x 46 | \$9,450.00 | - |
| 24 x 48 | 26 x 50 | \$9,950.00 | - |
| 28 x 28 | 30 x 30 | \$7,320.00 | - |
| 28 x 32 | 30 x 34 | \$7,760.00 | - |
| 28 x 36 | 30 x 38 | \$8,285.00 | - |
| 28 x 40 | 30 x 42 | \$8,945.00 | - |
| 28 x 44 | 30 x 46 | \$9,595.00 | - |
| 28 x 48 | 30 x 50 | \$10,220.00 | - |

Prices are for up to 8" of slope.



Rent-to-Own Is Easier Than Ever

120 DAYS SAME AS CASH

OUR HASSLE-FREE RENT-TO-OWN PROGRAM

Need extra storage but don't have the cash? You may want to consider our rent-to-own program. This hassle-free method allows you to rent the building of your choice on a month-by-month basis. Enjoy the convenience of having storage at your home or business for about what you would pay for a fixed storage unit. The best part is that at the end of the rental agreement, the building is yours!

- No credit check.
- Only a small amount of rent down required.
- Conveniently placed at your business or in your backyard.
- No long-term contract. Our one month agreements may be terminated anytime.
- Rent-to-own is strictly rental with the option to purchase.
- Payoff early at any time with no penalty.

Rent for 2, 3, 4 or 5 years & own it for a lifetime.

We look forward to working with you and want to be helpful, professional and courteous and bring you the quality and service you deserve.

»» Heritage Structures Advantages

- Lifetime warranty.
- Triple-layer roof design – the most deluxe.
- Thicker sidings and stronger walls.
- Custom colors on all structures – we can custom match to your home!

»» Special Design Advantages

- Mold-free products (no mold-prone plywood!) A unit of CDX plywood left out in the rain can mold the very next day! We've tested our products and insist on only the best materials without these problems.
- Fade-resistant exteriors

»» Process Advantages

- Locally built, much better service from order to delivery versus shed dealers. (Our lead time is usually 1/2 of the typical wait time. We build in heated shops and deliver year-round.)
- Buy LOCAL: Allows you to receive a predictably reasonable price for a superior product.
- We do complete quotes that include leveling and gravel installation, giving you an exact cost up front. No secondary contractors are involved that charge you for gravel work or do a mediocre job of blocking it up.
- Optional site check to ensure a smooth, professional delivery

Experience something truly grand for yourself -



A Heritage Structure in your backyard!



CAPE COD COTTAGE



NEW ENGLAND DUTCH BARN



GABLE COTTAGE



GABLE COTTAGE GARAGE



GAMBREL LOFT BARN



GAMBREL LOFT GARAGE



DOUBLE WIDE GARAGE



CLASSIC CHALET



CLASSIC QUAKER



CLASSIC STUDIO

HERITAGE STRUCTURES



PHONE 585.815.0640

EMAIL SALES@HERITAGESTRUCTURES.ONLINE

VISIT US 1136 NY-318, WATERLOO NY 13165